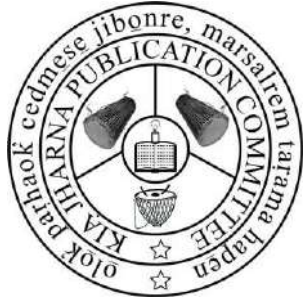


# SANTALI PARSİ POHA



Sasapraokin :

Alakjãrĩ Murmu  
Raghunath Hãsdak'

Kia Jharna Sonodor Kamiti  
Chota Durgapur, PO Arjunpur  
Via Hiranpur, Jila Sahebgonj  
Jharkhand - 816 104  
011-2812-1111, +91-9868-305-015  
Email : alakjari@gmail.com

## SANTALI PARSİ POHA

Sasapraokin :  
Alakjãrĩ Murmu  
Raghunath Hãsdak'

© Sasapraokin

Pahil chapa : 2016  
Pahil rada : 1000

### Main Distributor

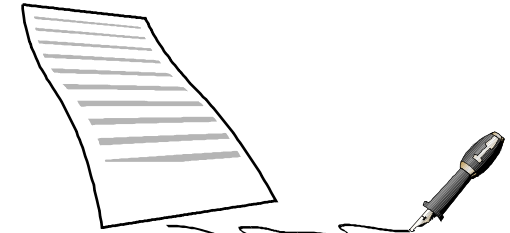
Raghunath Hãsdak'  
Citri Ghuṭu Colony  
Gokulpur, Pakur - 816 107  
Jharkhand  
(Mob.- 09955460619, 9102705118, 8002309770)  
E-mail : raghunathhansda53@gmail.com

### Distributor

Md Sanaul Haque  
Vill- Chota Durgapur  
PO- Arjunpur, Via Hiranpur  
Dist.- Sahibganj  
Jharkhand 816 104  
9939709052

### Chapakhana :

Haji Computer Print  
Pakur, Jharkhand  
Mob.- 9534209874




 MIT'KALI
 

Parsi do somaj reak'arsige. Miṭṭen somaj tinak' lahawkana se tayomakana mente, ona reak'tula ḍaṇḍic' do parsige. Jāhāe jatak' parsi judi maṭaena, eṇḍekhan ona jaṭ se somaj do gujuk' chada ar jāhān upaige banukṭaea! Parsirege ente omon khon moron hābic' reak' joto lekan legariko do bandi samṭaoakana. Jos kathatem menlekhan; parsi tinak'ge lahakā, unak'ge ona somaj do laha calakā.

Parsi do aranko reak' muraige. Ar noa arankoge gapalmarao do beharok' reak' ari menakā. Disa dohokak' do niage je gapalmarao okako sabad/arān beharokkan, ona do jemon somaj reak' anāṅoc tahentae, ar bañ khan anāṅoc bañ taṅren dhorage gapalmarao do bhage sahṭte ohoge hoe darelena. Parsi do roṛ ar ol bar lekate sodor dareakā.

Santali hō miṭṭen mare ar soros parsi kana. Santali reak' otomon tis ar ceṭ lekate hoelen do khondronḍ reak' bisai hoe dareakā. Jemon duniaren ar etak' jatko do akoak' parsiren jonomdatako do akoren āgil hapramkogeko laṭicetkōa, eṇḍekhan Hoṛ hoponko hō Santali parsiren jonomdata akoren āgil hapram Pilcu Haram ar Pilcu Budhigeko laikin, jāhān bhul do pasec' bañ hoyokā. Man NK Verma (BT) okoe do Harappa ar Mohonjodaro reak' sohboṭ do Hoṛ hoponak'ge tahēkana menteye dabiṭa, uni do nahak' Santal somajre beharokkan khōṇḍ reak' citarkoe ari bandhikeṭte Cae Campa Dag Goṛhon lekan

lipi hōe sirjauakada. Lai reak'jos do niage je jāhātinakbon laṭic' barae je Santali do aḍi mare parsi kana; menkhan Santali reak' onol rupre janam do 1852 salkorege hoyakana. Noa do sarigea je Man Jeremia Philip do Hoṛ hoponko cetanre "An Introduction to the Santal Language" pahil puthie chapa sodorkeda. Disakak' do niage je noa puthire Santali laṅif do Baṅgla harop beoharakan tahēkana. Menkhan tayom dinkore Baṅgla harop do Santali laṅif obigyanik karonte baṭil ocoena.

Sanam lekan Santali parsi khondronḍiako, noa do sarigeke laieṭa je Santali sāohēṭ hara buruien asol aḡuadarko do Misānarikoge. Menkhan noa hō sarigea je noa sonot kamire eken Misānarikoak'ge ti tahēkan do thora bhul bujha-bujhi reak' katha hoyokā. Cedak'je Misānariko chadakate unbidalren saheb-subako (asokaete bilati sahebko) hō noa kamire aḍi lekan gorogoporo tahēkantakoa.

Santali onol ruprey puṭaken tehen 150 serma khon hō jasti hosor paromena. Un din khon tehen hābicṭe Santali sāohēṭ tinak' hābicṭe tarām lahakeṭ do khondronḍ reak' bisai kana. Enterē hō aḍi khatote Santali sāohēṭ reak' nagambon pañja lekhan, noabon nama je Santali sāohēṭ do nit hābicṭe aḍi lekan sopok'rodok' dahar ar aḍi lekan hoe-bhārṇdoko talateye parom hecakana. Un dinte aḍi lekan onoliako omonena ar aema lekan puthi-sakamko hō uchan hecena. Santalite kahni-naṭok, ṅōṛhē ar judasi kahniko chapa sodorena. Santali laṅif aḍi lekan lipiko reak' hō sirjan hoyena. Inakate Bharotia Sambihan reak' Iralak' Unudukre Santali reak' anāṅoc nam ocoe laṅif hō aḍi lekan laṛaonako hoe paromena. Noa surikre laikak' do niage je Santali do Sambidhan reak' iralak' unudukre 22

Disembor 2003 hilak'anaŋoce namkeda.

Cetanre laien Santali sāohēf reak' nagam do sarhaoanakge. Menkhan ađi bhabna reak' katha do niage je unak' din paromokkanre hō Santali parsi do cekan lekana mente, bañ do bađae reak'ar bañ do ona khoj tolas reak' sad sanage sarsaoatbon. Nōkōe noa bañ bađae reak' jo kangea je nit abo goṭa ṭaṇḍiren Hoṛ hoponko milaukate Santali do goṭ gidikae (mohor metao) reak' jiajid kurumuṭure laḡiā paraoakae menakbona. Menako; jāhā parsi reakge bisi jañ do hoyokkana, ona parsi reak' Phonetics (Arañ Goṛhon) ar Morphology (Rup/Urgan Goṛhon). Noa Arañ Goṛhon reak' eken miṭṭen deṭ-deṭ namunabon nelange : **kol** do miṭṭen Santali sabad kana. Menkhan arañ ucran reak' gun lekate noa reak' mane (meaning) do ayatre laṛcaṛok' dharate juda-judagea se bodolokkana. Hoe dareakā; jāhāe Santali bađae hoṛ, noa sabad reak' ucran (pronunciation) oka ayatre (sentence) oka leka arañok'/roṛogok', ona do bes lekateye bađae boteca. Menkhan, ini hoṛge tinre onol rupre ona **kol** sabade olefa, tobe khange thoṛ uni hoṛ do ađi muskilreye paraokkana. Uni hoṛak' arañ goṛhon cetan bañbađae bañ karonte, uni do joto lekan ayatre **kol** sabad do miṭ lekageye ol gidikakā ar ona doe parhao sojhe gotkaka, jemon- i) ciṭhi **kol** do alom hiriña; ii) dak' calao **kol** do baṛicakantalea; iii) **kol** cērē do ađi mōnjko kuhuia. Noa pene ayatre beoharakan kol sabad reak' arañ do miṭ eṭagicak'khon ekalte judagea. Noa **kol** sabad reak' onako pene ayatre sahi onol rup do nonka hoyok'jarura : i) ciṭhi **kol** ... ; ii) dak' calao **kol** ... ; iii) **kol** cērē ... Ona iaṭe menogokkana je Santalire ađi dher onkan sabadko menakā, oka do asokaete **e, e, e** ar **o, o, o** arañ reak' tophat bañ bujhaṅkaronte miṭ lekagebon ol gidikakkana.

Ađi bhabna selet roṛogokkana je Santali sāohēf reak' nagamre okoe onkan miṭ hoṛ hō bako disakkana, okoe do Santali parsi gonoṭhon reak' bañbađae tahēkantako. Onko do mēf japiṭkatege sāohēf akhrareko khenčerlengae; menkhan ona do bin khod bađaetege. Hē, tobe miṭ hoṛe diṣa namokkana, abokoak' ṭemec' hudis karonte uni dobon bhaṇḍan atkedeā. Uni do Santali parsi reak' ađi gaḡhir bañbađae tahēkantaēa. Uni do Santaliren ađi marañ parsi budgariā (linguist)geye tahēkana. Uni do Hoṛ hoponkoak' gun lekate Santali reak' mimiṭ arañko do ađi mōnjte bađae are bujhaṅkaṭ tahēkana. Onatege uni do ađi lekan onolkotae modre pea beakoron (grammar) ar miṭṭen "Santali Katha Murai" (A Santal Dictionary) puthi ol are chapa sodor oṭokada. Uni budgariā ar jāhāe do bañ, bickom uni do **Man Piṭ Bodin** menkatebon bađaeakadea. Tin din haḡic' noa dhuṛi dhartire Hoṛ hoponko tahena, un din haḡic' **Piṭ Bodinak'** nūtum do jiarḡe tahē idikā. Parsi Budgariā **Man Piṭ Bodin!** Tire Jugey Bahaokma!!

Piṭ Bodinak' do maha bebhagtae, ente uni do Santali Parsi laḡiṭ okae kami oṭokaṭ, ona reak' sahi gonon do abo Hoṛ hoponko bañbon em dareakana. Dhorom ar tolhātiā reak' pasi baberte, uni dobon pasi gockedeā. Laikak' do niage je Santali parsi reak' punji ar se ita menkate, uni do cetanre laien puthikoe ol doho oṭoakawatbona. Uniak' Hoṛ hoponko cetan bhage hudis tahēkan iaṭege alin bapurickin do nōkōe uniak' itage ape diṣam hoṛko then er pasnao reaklin kurumuṭuakada. Noa huḡin puthi do uniak'umul panjakatege olakana.

Noa Santali Parsi Poha huḡin puthi do ađi

hudiskatelin' ol sodorakada. Noa puthi do kaṭic'-laṭu ar onkan sanamko disakatege olakana, okoe do Santali parsi laḡit' dand ar dulaṛ menaktako. Noa do angoctege hoyoktabona je dulaṛia parsitabon do aḡi lekan karonko iate, nit gujuk' hora sengeye mohṇdawakana, onate alin' noa puthiren sasapraokin do mucaṭ dhao, uni gujukkan hoṛ ran kotēcaē reaklin' kurumuṭuakada. Ne haḡi saṛi Santali do bagarok' horare menaka. Asokaete roṛ-landa ar enec'-serenkore do aḡi lekan baṛic' tejoko (virus) bolo hecakana. Saṛi Santali do nonkabon bandok' baṛicakadea je ar uni pachnaoe do aḡi muskil. Abo Hoṛ hoponko do dhorom, rajari, tolhāṭia ar lipi reak' gūṛchi babertebon tol kukucakana. Ona gūṛchi khon chadaok' reak' do okoe hō baṇbon kurumuṭueṭa. As menaka, pasec' noa huḡin' puthire baṇcaok' reak' miṭṭen huḡin' jiripbon nel nam dareak'.

Alin' do ar miṭ' dhao dohratelin' jahireṭkana; enkathae asokaete kaṭic' gidraḡo laḡit' Santalite onkan bhage puthiko do auri hataraka. Noako hudis-bicarkatege noa puthi do joto umarrenko disakategelin' suṛa goṭkada. Asokabon tayom daram do noa reak' bes lekatelin' moneaka.

Hoe dareaka, noa puthire aḡi lekan bhul-bisarko menak' botēca, daekate onako do laḡ ruar ar apekoak' daman salhako koyok' horrelin' tahēyena.

Manot johar selet,

Alin' do Santal Somajre Bapurickin,  
Alakjāri Murmu  
Raghunath Hāsdak'

Tarik : 02 Nobembor, 2016



## UNUDUK'

### Bisai

### Sakam

1. Santali Haropmala
2. Haṭinok' Haropko
3. Harop Reak' Oporom
4. Harop
5. Araṇ
6. Harop Reak' Acak' Rup
7. Santali Reak' Haropmala
8. Āṭ-Araṇ ar Nase-Araṇ
9. Tarko-Araṇ ar Be-Tarko Araṇ
10. Santali Ucran Beste Hoe Ocoere...
11. Ucran Gun
12. Santali Haropmalare Beoharakan...
13. Roman Santali Reak' Asol-Asol ...
14. Bananre Bhul Sudhar
15. Dabar-Araṇ
16. Raṛ Bodolok' Araṇ
17. Dobaṭia Araṇ
18. Araṇ ar Lipi
19. Jiraok' Cinhako



SANTALI HAROPMALA  
BEHAṬINOK' HAROPKO  
(VOWELS)

A AK'



E E haropte Santalite núnum (noun) sabad do aḍi komgea. Noate ehobok' eṭak' sabadko - em, ebhen, edel, ente eman.

E E haropte Santalite núnum (noun) sabad do aḍi komgea. Noate ehobok' eṭak' sabadko - edre, eraḍom, eṅga, eman.

I IL



O O Akhorte Santalite núnum (noun) sabad do aḍi komgea. tobe noa akhorte ehobok' sabadko do - ohoć, obor, ocok', ojok', okte, ok', ol, ot, okoe, on, onol, opsor, oṅde eman.

O OṘAK'



U UL



JOR EMĀK' BEĤAṬINŌK' HAROP  
(VOWELS - RESULTANT)

Ạ ARSI



Ē akhorte Santali sabadko do aḍi komge ehobokkana, entere hō noa sabadre beharokkana - ẹi, pajheṛ keṛ-keṛ , re-re-re (Sohrae gai jagao seren eman.

Ọ Haropte ehobok' Santali sabadko do komgea. Noako sabadre beharokkana - ọl (jo eman dohokate belek'), kọl (cērē), piọ (cērē), sọl (hako), sọlọ (lekha) eman.

MŪ AṚAN BEĤAṬINŌK' HAROP  
(VOWELS - NASALIZED)

Ă ĀRGOM



Ā haropte ehobok' Santali sabadko do komgea. Noate benaok' sabadko - dhũă, ărti, bărti, kărchu, hărũ, kisăṛ eman.

Ĕ haropte ehobok' Santali sabadko do komgea. Noate benaok' sabadko - cērē, dăṛē, gērē, rērēt, mēt eman.

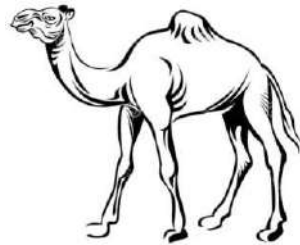
Ė haropte ehobok' Santali sabadko do komgea. Noate benaok' sabadko - ẽṛgo, ẽṛgot.

Ī haropte ehobok' Santali sabadko do aḍi komgea. Entere hō noa haropte benaok' sabadko do, jemon - iṛíc, găṛi, sīṛíc, pīṛít, dũṛi hako eman.

**Ō** Ō haropte ehobok' sabadko do komgea. Noako sabadre beoharakana - mōrē, dhōr biñ, ōnōrhē, gōrē eman.

**Ō** Ō harop do kom machage beoharok'a. Noako sabadre namok'a - jhōrea, jhōea (Small fry)

**Ū ŪṬ**



**HAṬINÓK' HAROPKO**  
(Consonants)

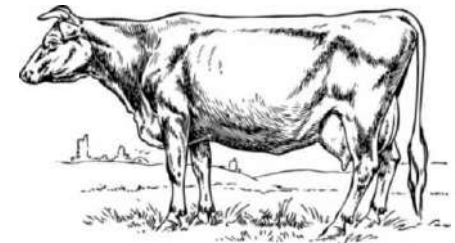
**K KADA**



**KH KHANCA**



**G GAI**



GH GHARİ



Ṅ Ṅ Akhorte do oka sabad hõ bañ ehobokã.  
Noate benaoen sabadko - ḍañ, ḍañ, doñ  
eman.

C COSMA



CH CHATAR



J JONOK'



JH JHANDA



Ṅ ṄELE



Ṭ ṬAMAK

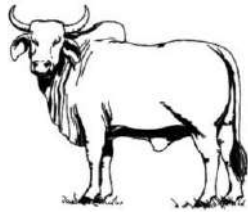




ṬH ṬHILI



Ḍ ḌAṄGRA

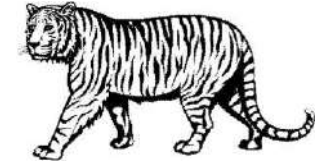


ḐH ḐHOL



**N** Ṇ akhorte sabad do bañ ehobok'a, menkhan noa akhor do sabad reak' talare beoharok'a jemon - kaṇḍa, laṇḍha, jhaṇṭi, kaṇṭhar eman.

T TAṘUP'



TH THAṘI



D DARE



**DH** DH Akhorte Santali n'unum (noun) sabadko do kom machagea. Noa akhorte ehobok' sabadko do - dharti, dhon, dhorem eman.

N NAHEL



NH

NH haropte ehop'kate núnun sabad do bañ benaokkana. Noate benaok' sabad - Nhaṇḍe, nhate, nhawa, nhote, nhākãe.

P PARKOM



PH PHŪRŪK'



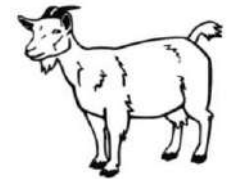
B BANA



BH BHEDA



M MEROM

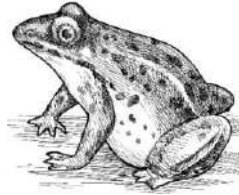


Y

Y akhorte núnun sabad do bañ leakage. Noa do hohojon ar seren'-durañ emanre jasti beharokã, jemon-ya, yoi; yore, yohae eman.

**YH** YH haropte ehopkate nūnum sabad do  
bañ benaok'kana - kuṛhiyha

**R** **ROTE**



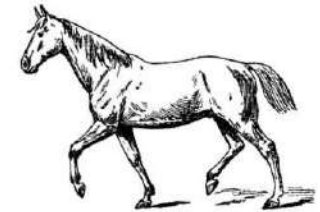
**L** **LALTEN**



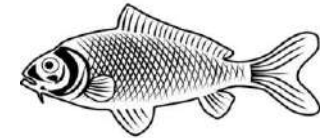
**V** V haropte jāhān sabad do bañ ehobokā.  
Noate benaok' sabadko - jivi (soul),  
ever (fan), liveṭ (bent) eman.

**W** W haropte jāhān sabad do bañ ehobokā.  
Noate benaok' sabadko - sakwa (horn-  
trumpet), sagwan (teak tree) eman.

**S** **SADOM**



**H** **HAKO**



**Ṛ** Ṛ haropte ehopkate nūnum sabad do  
bañ benaok'kana. Noate benaok'  
sabadko - hoṛ, roṛ, daṛ eman.

**ṚH** ṚH haropte ehopkate nūnum sabad do  
bañ benaok'kana. Noate benaok'  
sabadko:- kuṛhiṭ/kuṛhiyha



Keceř Haropte sabadko do bai ehobok̄a. Noa do tala ar mucařre lagaok̄te sabad benaok̄kana, jemon :

K' AK' BAK' CAK' DAK'

C' AC' SEC' MŪC' HEC'

T' CET' AT' ĐET' MĚT'

P' UP' SAP' DAP' TAP'

H' AH' UH' OH' LEH'

AKHOR OROM  
LAṬU HAROPKO  
Behařinok' Harop  
(vowels)

A E E I O O U

Ạ Ẹ Ọ

Ă Ằ Ě Ě Ī Ō Ō Ū

Hařinok' Harop  
(consonants)

K KH G GH Ñ K'

C CH J JH Ń Y YH C'

Ṭ ṬH Ḍ ḌH Ṅ R ṘH

T TH D DH N NH R

L T'

P PH B BH M V W P'

H H' S

Kecet' Harop Aṛān  
Checked Consonants)

K', C', T', P', H'

KĀṬIC' HAROPKO  
Behaṭinok' Harop  
(vowels)

a	e	e	l	o	o	u
ḁ	Ḃ	Ḅ				
ã	ã	ẽ	ẽ	ĩ	õ	ũ

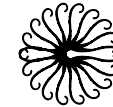
Haṭinok' Harop  
(consonants)

k	kh	g	gh	ñ	k'		
c	ch	j	jh	ń	y	yh	c'
t	th	ḁ	Ḃ	Ḅ	Ḇ	Ḉ	

t	th	d	dh	n	nh	r	
l	t'						
p	ph	b	bh	m	v	w	p'
h	h'	s					

Kecet' Harop Aṛān  
Checked Consonants)

k' c' t' p' h'



## HAROPKO REAK'OPROM

Mimit' parsire haropko reak' arañ do ucran são sombond tahenkana. Noako ucranok' do olkate sodor lagit' Harop Cinhkaõ reak' dorkar paraokkana. Santali parsire hõ etak' parsiko lekage ucranokre aema lekan aranko menaka. Noa aranko modre Behatinok' Harop (vowels), Hatinok' Harop (consonants) ar Kecet' Harop (checked consonants) menaka. Metakme jotore pe lekanak' harop aranko lagit' haropko reak' bondobos menaka. Santalire tehen' hãbic' okako arañ lagit' harop ban benoakan, onako sanam aranko suc'-sutruc' ucran gun nelkate harop benoakana. Ar onako lagit' hõ noa nãwã haropmalare thãi reak' bondobos hoyakana. Parsire mimit' harop do jãhã ban jãhãtak' arane sodorefkana; ona iate harop talare sombond menaka. Noa chadakate mimit' parsı reak' ucranok' bondobos reak' begar hõ menaka.

### HAROP (LETTER)

Santali parsire jotote mõrẽgel are (59) gotec' haropko larcarokkana:

- (i) Behatinok' Harop (vowels) : **a, e, e, i, o, o, u**  
 " Gahla arañ (resultant) : **a, e, o**  
 " Mũ arañ (nasalized) : **ã, ã, ã, ã, ã, ã, ã, ã** - 18
- (ii) Hatinok' Harop (consonants) : **k, kh, g, gh, ñ, c, ch, j, jh, ñ, t, th, d, dh, ñ,**

**t, th, d, dh, n, nh**  
**p, ph, b, bh, m, y, yh, r, l,**  
**v, w, s, h, r, rh - 36**

(iii) Kecet' Harop (Checked consonants)

: **k, c, t, p, h' - 05**

Santali Beakoron (Santali Grammar) reak' asol rehet' do pasecbo badaeagea. Enhõ subitak' lagit' ar noa beakoron reak' laha sec' beste badae lagit' nonde adomak' beakoron hatin' babot bean (definitions) emogokkana.

## ARAN (PHONEME)

Arañ do sabad reak' rehetet' kana, ona begorte sabad do ohoge ohma darekoka. **a, a, e, e, e, i, o, o, o, u** arañ emanko do manwawak' arañ thailak' hotete sodorokkana, tobeanecge noa do arãbo metakkana. Noage olkate sodor rupge harop dobo metakkana. Harop do Arañ Cinha hõko metaka. Ingraji reak' Bag ar Santali reak' Begre nasenakge begar menaka; marañ begar do banuka, cedakje banar parsirege mit' lekanakge arañ menaka. Menkhan olokre banar reak' arañ cinha mit' etakak' khon thora judagea. Onka lekabo neleda je noare arañ reak' benegar do banuka; menkhan harop reak' benegar do jarurge menaka. Arañ dobo ucran arbon anjom dareaka; menkhan harop dobo ol, parhao arbo nel nam dareaka. Ona iate joto khon katıc' ucran-arañ do Haropbo metakkana.

## HAROP REAK' ACAK' RUP

Harop do ona mul aranko metakkana, okaṭak' do oho haṭin' darelēn, jeleka-

**a, a, e, o, k, c, t** emanko. daka sabad reak' barea arān menaka **da** ar **ka**. Noa reak' hō ponea kuṭṭa menaka **d+a** ar **k+a**. Ina tayom noa ponea arānko do ar ohoge kuṭṭa darelēna, ona iate noako do harop kana. Khaṭote do niage je noa do kaṭic' khon kaṭic' arān kana, **one** oka do lutur reak' bisoe kan ar ona do ohoge kuṭṭa darelēna. Harop do aboak' ucranok' parsi se arān reak' joto khon kaṭic' utarak' haṭin' kana. Noa kaṭic' haṭin' milaukatege sabad ar ayat do benaokkana. Saphate baḍaena je Harop ar Ucranre aḍige aḍi bhitri reak' sombond menaka. Noa do miṭ' eṭakak' khon ohoge begar darelēna. Roman lipi Santalire 59 goṭeṭ harop reak' miṭen malage Haropmala doko metakkana.

Nonḍe beste bujḥau laḡiṭ' mimiṭ' arān dol reak' haropko emogokkana :-

1. Beḥaṭinok' Harop (vowels) : **a, e, e, i, o, o, u**  
 "Gaḥla arān (resultant) : **a, e, o**  
 "Mũ arān (nasalized) : **ã, ã, ê, ê, ï, ï, õ, õ, ù**
2. Haṭinok' Harop (consonants)  
 Naṇḍri arān (velar guttural) : **k, kh, g, gh, n, k'**  
 Samaṇ taru arān (palatal) : **c, ch, j, jh, n, y, yh, c'**  
 Taru arān (cacuminal/cerebral) : **t, th, d, dh, n, r, rh**  
 Daṭa arān (dental) : **t, th, d, dh, n, nh, r, l, t'**  
 Luṭi arān (labial) : **p, ph, b, bh, m, v, w, p'**

Cetan jambe arān (glottal) : **h, h'**  
 Cetan alaṇ dol reak' arān (sibilant) : **s**

3. Kecet' Harop Arān : **k, c, t, p, h'**  
 (Checked Consonants)

## SANTALI REAK' HAROPMALA

Ucran reak' do pea asol haṭin'ko menaka; ar onako do hoyokkana Beḥaṭinok' Harop, Haṭinok' Harop ar Kecet' Harop.

i) Beḥaṭinok' Harop : Beḥaṭinok' Harop do onako metakkana; **one** okaṭak' reak' ucran do begor akotte se moca khon ucranok' hoe bahrete oḍokokkan. Noa reak' ucran do eṭakak' harop reak' begor gorote hoyokkana. Noa do saḍhinga. Noa ucran jokhec' bhitri khoṭ' oḍokok' hoe moca khon begor akotte oḍokokkana. Noa ucranokre naṇḍri ar taruge larcarokkana, alaṇ ar luṭi do baṇ. Menkhan **o** ar **u** ucran jokhec' luṭi do larcarokkangea, menkhan thora cokronokkate.

ii) Haṭinok' Harop: Haṭinok' Harop do onako metakkana, **one** oka do ucran jokhec' Beḥaṭinok' Harop ucranokre miṭen baṇ nel namok' Beḥaṭinok' Harop reak' arān oko menak', oka do Roman haropre baṅko bondobosakada; **one** oka do begor nel namokak' Beḥaṭinok' Harop begorte baṇ ucran daṭekok'. Namuna **k** do saḍhin rupre do oho ucran

darelena. Ona sãote miṭṭen bin nel namok Behaṭinok' araṇ (sound) menaka. Jãhãn katha se jãhãnak' harop ucranok' jokhen joto khon lahare Behaṭinok' arange ucran lahaka, ado ina tayomge Haṭinok' araṇ do ucranokkana. Ona iate Haṭinok' Harop do ona araṇ kana, one oka do ucranok' jokhec' moca bhitri khon hijukak' hoe mocare jãhã baṇ jãhã then jãhã ruprege akotokkana. Ona iate Behaṭinok' harop reak' araṇ do sadhinga ar Haṭinok' harop reak' araṇ do tchadga.

iii) Kec' Harop: **k', c', p', t', h'** Noako sanam harop do Kec' Haropko (checked consonants) metakkana. Noako sanam harop do adom-adom sabadko chadkate jaoge sabad reak' mucaṭre lagaokkana. Noako harop do tinre sabad reak' mucaṭre hijukkana, unjokhec' ona harop reak' ucran araṇ do ackage hoyokkana ar bai-baite ackage muçadokkana. Noako Kec' Harop do ac' motore sadhin rupre do ohoge araṇ darelena bickom sabad sao milakate ucranoka. Ente noa reak' gunge nonkana je jãhã lekatege ucran reakbon kurumuṭui baṇbon ucran jut dareaka. Noa do adha ula ruarkeṭ leka ar adha do jom ruarkeṭ leka ucranoka. Noako do Santali parsi baṇ badae hor do ekalte baṅgey ucran jut dareaka. Ona iate eken puthi parhao mototekate do baṇ hoyoka.



## ÃṬ-ARAṆ (ASPIRATE SOUND) AR NASE-ARAṆ (NON-ASPIRATE SOUND)

Roman lipi Santalire mōrẽ dol Haṭinok' Haropkore pahilak' do Haṭinok' Harop nase-araṇ (non-aspirate sound) ar dosarak' ar ponak' do aṭ-araṇ (aspirate sound) Haṭinok' Harop kana. Ucranokre moca khon hoe odokok' dharate Haṭinok' Harop reak' do bar haṭinre haṭin dareaka :

i) Nase-Araṇ; ar ii) ÃṬ-Araṇ.

Tin jokhec' moca bahrete hoe odoṇokkana, tobe ona do sanam araṇre miṭ leka moca khon hoe baṇ odokokkana. Adomak' Haṭinok' Haropko ucran jokhec' komnok' hoe moca khon bahre odoṇokkana ar adomak' do dhernok'. Partul -

Moca samaṇre sor nokre diuha dohokate k ar kh harop reakbon ucranlege. Abo do noabo nela je kh haropbon ucranlere k khon dher hoe moca khon bahrete odoṇokkana. Arbon nela je judi k araṇte diuha baṇ irjokre ho kh araṇ ondonlenre dhorage diuha do iric' botejokgea. Ona iate okatak' haropko ucran jokhec' nasenak' hoe odokokkana, ona Haṭinok' Harop do Nase Araṅko (non-aspiration) metakkana ar okatakre jasti hoe moca bahrete odoṇokkana, ona do ÃṬ-Araṅko (aspiration) metakkana.

Roman lipi Santalire mōrẽ dol pahilak' Haṭinok' Harop do Nase-Araṇ Haṭinok' Harop kana ar dosarak' ar ponak' Haṭinok' Harop do Aṭ Araṇ Haṭinok' Haropko metakkana. Roman lipi Santalire Haṭinok' Harop reak' do noako kana :-



Nase-Arañ (Non-spirate)	Āt-Arañ (Aspirate)
k, g	kh, gh
c, j	ch, jh
t, d	th, dh
t, d	th, dh
p, b	ph, bh

**TARKO-ARAÑ AR BE-TARKO ARAÑ**  
(Voiced Sound and Voiceless Sound  
or  
Roaring and non-Roaring Sound)

Inboro khon moca hābic' hijukak' hoe sojhe mocare do bañ hijukkana. Abo sanam horak' nañdrire miť lekanak' arañ jontro menakā. Arañ jontrore (sound gland) jelenťe benoakan barea birni menakā. Ona do behla banam retae jokhec' tarkok' leka onakin birni hō tarkokkana, okatak' do arañok'-thailakbon (sound gland-sound box) menkea. Noa arañok' thailak' do adom-adom oktere miť etakak' sāote ađi sor hijukkana. Tin jokhec' ona arañ thailak' miť etakak' sorre hijukkana, un jokhec' judi inboro khon hijukak' hoe onare takic'lenkhan, tobe ona do tarko rāwāokkana. Tobeanečge arañok' thailak' reak' tarko rāwāo moca hābic' seterokak' hoere mesalokkana. Menkhan tinre noakin arañok' birni miť etakak' khon sañgin'-sañginre taħenkana, unre hoe do sojhe arañok' thailak' begor tarkoe tuluc' moca hābic' hijukkana. Tarko

(voiced) sabad reak' manege rāwāo se reta kana. Nonđe do tarko reak' mane jāhāñ jinis tarkok' reak' sompok' sāo do bañ dohoakana, bickom hoe reak' tarko nañdrire menak' barea birni sāote tarko sāo sompok' dohoakana. Ona iate jāhāťak' Haťinok' Haropge ucran jokhec' ucranok' birni odokok' rāwāo reta sāo milau taħenkana, ona Haťinok' Haropge tarko arañok' Haťinok' Harop (voiced consonants) doko metakkana. Menkhan okatak' Haťinok' Harop ucran jokhec' arañok' birni miť etakak' khon sañgin'-sañginre taħenkan karonte noa hoe do rāwāo sāote bañ mesalokkana, ona Haťinok' Harop do betarko (voiceless) Haťinok' Haropko metakkana.

Roman lipite ologok' Santalire mōrē dol Haťinok' haropkorebon nela je mimiť dol reak' pahilak' barea Haťinok' Harop do noñka leka kana:-

<b>k</b>	<b>kh</b>
<b>c</b>	<b>ch</b>
<b>ť</b>	<b>th</b>
<b>t</b>	<b>th</b>
<b>p</b>	<b>ph</b>

Noako sanam harop do betarko Arañ Haťinok' (voiceless sound) kana. Menkhan tesarak' ar ponak' harop, jeleka :- g, gh, j, jh, đ, đh, d, dh, b, bh; noako sanam harop do Tarko Arañ Haťinok' Harop kana. Ona iate Tarko Arañ Haťinok' Harop (voiced sound consonants) reak' mane do ona Haťinok' Harop kana, one okatak' do bon ucranlere arañok' birni tarko rāwāo hoe sāo mesal taħenkana ar Betarko Arañ do ona Behaťinok' Harop kana, okatak'

dobon ucranlere, ona hoe do tarko rãwãok' hoe são mesal bañ tañenkana.

SANTALI UCRAN BESTE HOE OCOERE  
BEHAṬINOK' HAROP (VOWEL) AR HAṬINOK'  
HAROP (CONSONANTS)  
CETAN-LATARRE LAGAOK' CINHAKO  
(DIACRITICAL MARKS)

- Behaṭinok' Haropko (vowels) cetanre lagaok' cinha (tilde above) ( ~ ) do mũ ar moca (nasalization) aṛañ udug laḡiṭ kana; jeleka -  
ã, ã, ê, ê, ï, ï, õ, õ, ù.
- Behaṭinok' Haropko (vowels) latarre lagaok' cinha (dash below) ( \_ ) do khula aṛañ udug laḡiṭ kana ar noa cinha do e ar o latarre lagaokkana, jeleka- e, o.
- Behaṭinok' Haropko (vowels) latarre lagaok' cinha (dot below) ( . ) do gahla tuḡak' metakme jor emak' laḡiṭ aṛañ kana ar noa cinha do a, e ar o latarre lagaokkana, jeleka-  
a, e, o.
- Haṭinok' Harop cetanre lagaok' cinha (acute accent above) ( ' ) do tarute aṛañok' Haṭinok' (nasal) n cetanre lagaoka, jeleka- ñ.  
Noa reak' aṛañ do mũ horte oḡokokkana.
- Haṭinok' Harop cetanre lagaok' cinha (apostrophe above or on the right hand top side) ( ' ) do k, c, t, p

ar h cetanre jojom nakhare kecef' aṛañ udug laḡiṭ kana, jeleka -

k', c', t', p' ar h'.

- Haṭinok' harop cetanre lagaok' cinha (dot above) ( ^ ) do mũ aṛañ udug laḡiṭ n cetanre lagaokkana, one oka do ñ mũ aṛañ (nasal) hoyokkana.
- Haṭinok' Harop latarre lagaok' cinha (dot below) ( \_ ) do bhitri taru reak' aṛañ udug laḡiṭ kana. Noa cinha do t, th, d, dh, n ar r haropre lagaoka, jeleka :-  
t, th, d, dh, n ar r.

## UCRAN GUN

a, e, e, e, o, o, o, k', c', t', p', h' ar ñ haropko reak' ucran gun :

a- a harop reak' ucran do a harop reak' ucranok' hoe naṇḡdrire khula (dabao) nokkate oḡonokkan aṛaṅge gahla aṛaṅko metakkana ar ona aṛaṅge gahla rupre hoyokkana. Noa do a latarre gahla tuḡak' ( . ) hõko metaka. Noa aṛaṅge eṭak' parsi aṛañ khon Santali doe begareṭkana. Noa harop tayomre do bar harop (diphthong) reak' miṭ ucran rupre noa sãote i ar u hec' daṛeaka, e ar o do bañ, jeleka -  
a+i = ai (a+e do bañ) = aimai; a+u = au (a+o = ao do bañ) = paṭiau.

Noa harop do sabad reak' etohopre, talare ar mucaṭre ar saḡhin rupre; metakme sabad reak' sanam

ṭhāirege laṛcaṛokkana; jeleka :-

Sabad etohopre	Sabad talare	Sabad mucaṭre
agu, alu, abuk, alin, an, ari, amsi, arji,	sagai, kami, jali, mali, khalai, bhala, dal, kai	maila, kuba, kumba, bita, mandaria, candla

**e** - **e** aṛaṇ do alaṇ mucaṭ bhitri nakhare alaṇ goṇḍa khon notenok' reak' alaṇ reak' miṭ hīs coṭnok' alaṇ koṭ koṭonokkate moca khon oḍokok' hoe sakrae tuluc' aṛaṇokkana. Noa **e** reak' aṛaṇ beste babon anjom lekhac' i leka hō aṛaṇokbon anjoma,  
jeleka-

**cele** (who, which), **ge** (miṭ lekan tayom joṛao), **se** (louse), **edre** (anger) **kede, ede, eto**.

Noa harop do Ingraji reak' men leka aṛaṇoka.

jemon-

**en-len** (kajnum reak' mucaṭ joṛao) ar **se engoṭ** (stoop), **elem celem** (watch for an opportunity), **-kede-** (kajnum reak' tala joṛao), **eto** (break in). Thorabon digdha nogoka **e** ar **i re** aṛaṇ reak' benegar udugrebon etketōrēka, esto-bestonogokabo. Baṇ baḍae hoṛ do **ge** do **gi** leka hōbon ola sebon roṛa.

Ṇamuna lekate-

**seren, deren, terel, bele eman do sirin, dirin, tiril, bili lekabon ol/roṛ bhuletkana.**

**e** - **e** harop reak' aṛaṇ do Hindi ए harop aṛaṇ leka

aṛaṇoka ar Ingraji reak' do **air** leka. Noa harop reak' aṛaṇ do bhitri alaṇ mucaṭ naṇḍri se bhitri moca alaṇ latar sec' pheednokkate se khulaṇokkate ucranlenkhan hoyokkana. Noa aṛaṇ reak' aṛaṇ gun aṛankatege beste do bujhaṇ daṛeaka. Noa haropre **e** latarre khaṭo dag lagaokate **e** benaokkana. Aboren onoliako **e** ar **ere** jāhān begar bako bujhaṇ daṛeakkana. Noakin banar harop beoharre begar menaka,

jemon-

**jivet'** (life), **ilet'** (plaster over). Noa harop reak' begar do noa ayatre beste bujhaṇka "Chita do okoeren era (wife) kanae?" " Jonḍra do aṛile era " (to sow).

Noa harop do sabad reak' etohop, tala ar mucaṭre lagaokkana, jeleka -

Sabad etohopre	Sabad talare	Sabad mucaṭre
er, em, eger, en, enem, ende, ente, esel, eser	berel, herel, herem, leher, jerer, sarer, jer	bole, gede, gele, epre,

**ḡ** - **ḡ** harop reak' ucran do **e** harop ucranok' jokhec' oḍokok' hoe thora tala alaṇ cetan sec' rakapnokkate ar dabaonokkate oḍokok' aṛaṇ kana, **e** aṛaṇ leka baṇ ucranokkate **ḡ** leka ucranokkana. Noa do sari Santali roror hoṛge beste doe bujhaṇ daṛeaka. Santali aṛaṇ baḍae hoṛge noa reak' sebelteṭ doe bujhaṇ. Puṣṭaute bujhaṇ laḡif latarre emakan ayatrebon moneakma :-

- Bajun do patare pajher keṛ-keṛe hoholeda.
- Noa hasa do setonte rohoṛ keṛ-keṛena.

Cetanre emakan ayatbon moneakawat' khan pata-chata reak' sogoe hoho **ker-ker** sabad jaegare setonite rohorakan **ker-ker** sabad do ayatre ohobon larcar darekea. Nombor (a) reak' ayatre larcarakan **ker-ker** aran thaire nombor (b) reak' **ker-ker** larcarlen khan sajao do ban anjomoka. Roṛ reak' motlob do noage je Santali parsire nonkan gun menaka je okatak' do aboak' somajrebo beoharefkana. e harop do sabad reak' tala ar mucafre asokaete beoharokkana. Sabad etohopre e harop do adi komge lagaokkana, jeleka :-

Sabad etohopre	Sabad talare	Sabad mucafre
ei (jāhāe hohowae)	pajheṛ ker, ker, leh- leh' (seta hohowae jokhec)	re- re, re- re (sohrae jokhec gai jagao seren')

o - o harop reak' ucran do moca khon odokok' hoe banar luṭi cokṛo nokkate moca bahrete hoe odokokkana, jeleka -

**Sor** (near), **korā** (boy), **hoṛo** (paddy), **orak'** (house, home, family, abiding place), **oṭ'** (mushroom, toadstool), **osar** (broad, wide, to make broad) eman. Abo Santal onoliako adom jokhec' dobo digdhakkan iate o jaegare ghane do u hōbo oletkana. o do u sor reak' aran kangea. Menkhan u utar hō ban kana. Abo onoliako do olokre nonkanak' bhul hōbo hoe ocoeda :-

**po** jaegare **pu** (joṇdra po)

lo jaegare **lu** (dak'lo)

**poho** jaegare **puhu**

**jol** jaegare **jul** (seṅgel jol)

**godo** jaegare **gudu**

**hako** jaegare **haku**

**jorok'** ar **jorok'** reak' begar banbon bujḥau dareakkana.

(Seṅgel phedre gidraḳo **jorok'**kana; Saṛim khon dak'**jorok'**kana.)

**hoe** (be, become) ar **hoe** (air) reak' begar banbon bujḥau dareakkana.

(Neṣ cas do adi mōnj hoeakana; tapis hoe karonte, saṛim do oṭanena.)

**hoyok'** (become) ar **hoyok'** (shave) reak' begar banbon bujḥau dareakkana.

(Kaṭicre parhaokme, laṭukate am laṭitge porho hoyoka; Suna do setakre gocoe hoyoka.)

**hoṛo** jaegare **huṛu** (hoṛo cas)

**kol** jaegare **kul** (ciṭhi kol)

**lolo** (to fetch water) (**Kuṛikin do kunre dakkin lolokana**)

**lolo** (hot) (Tehen' doe setonakada, onate adi at **lolokana**.)

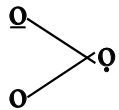
Roṛ reak' motlob do noage je mimit' sabad reak' banan (spelling) ar mane do juda-judagea. Mane judakkan khan banan hō judak' jarurkana. Mit' bar sabad chadakate.

o - o harop reak' aran do bhiri alan reak' mucafre naṇdri

khon oḍokok' hoe latar nōkkate khulā nōk' arān tuluc' oḍok bahrekkana. o do Ingraji reak' law leka arānokā. Noa harop do sabad reak' etohop', tala ar muḇātre lagaokkana; jeleka:-

Sabad etohopre	Sabad talare	Sabad muḇātre
ol, or, opol, omon, ot, okte, obra, opoman	kolom, hopon, hor, sol, dol, kol, sadom	lolo, rongō, joto, moto, khaḇo, dhodro

o - o harop reak' arān do o ar o tala reak' arān kana. Noa do noṅka benoakana :-



o ar o tala reak' arān kan iāte o do baṅ do o leka arānok' ar baṅ do o lekage, metakme kōl (cuckoo) cērē do baṅ do 'kol' (machinery) ar baṅ do kol (to send) lekage arānok'. Noa do o ar o arān khon begar o leka arānokā. Noa o do sabad reak' etohop', tala ar muḇātre lagaokā; jeleka :-

Sabad etohopre	Sabad talare	Sabad muḇātre
ol (lolote sakam olena) ohi-ohi (bhabna arān)	kōl (cērē) sōl (hako)	sōlo (gel turui)

Kecet Harop Arān : k, c, t, p, h  
(Checked Consonants)

k, c, t, p, h - Noako sanam harop do kecet harop kana (checked consonants). Noako sanam haropko do adom-adom sabadko chaḇakate jaoge sabad reak' muḇātre lagaokkana. Noa harop do tinre sabad reak' muḇātre hijukkana, unjokhec' noa harop reak' ucrān arān do ackage hoyokkana ar bai-baite ackage muḇadokkana. Noako kecet harop ac' motore sadhin rupre do ohoge arān se ucrān darelena, bickom sabad sāo milaukatege ucrānokā. Ente noa reak' gun noṅkana je jāhā lekatege ucrān reakbon kurumuḇui baṅgebon ucrān jut darekā. Noa do adha utkeḇ leka ar adha do ulā ruarkeḇ leka ucrānokā. Noako do Santali pārsi baṅ baḇae hor do ekalte baṅgey ucrān jut darekā. Ona iāte eken puthi paḇhao moto/hotete do baṅ hoyokā. Santali reak' ucrān se galmarao laḇit do Santali bhasa-bhaṣi hor tuluc' galmarao se roror hoyokā.

Santali pārsi reak' ucrān ced laḇit do arānkatege bujhaūkā. Ona iāte paḇil do noako mōrē goḇec' kecet harop reak' ucrān okare hoyokkana, onabon cetlege. Noako harop do miḇ-bar sabad talare larḇarok' chaḇakate jaoge sabad reak' muḇātre hijukkana, jeleka :-

Harop	Sabad etohopre	Sabad talare	Sabad mucatre
k'	-	dak'edae, rak'edae	ak', jak', marak'
c'	-	goc'ic', repec'ic'	ac', lac', cepec'
t'	-	mēf'anic', mēt'dak'	uf, gef, japuť
p'	-	sasap'ic', up'anic'	ap', sap', rakap'
h'	-	oñi-oñikedae	leñ'-leñ'waeme

**k'**- Noa arañ do nañdri khon ođokok' hoe nañdri bhitrirete adha do jom ruarkeť leka bhitrirete tahē ruarok' ar adha do nañdri bahrete ođonokkante ackage mucadok' leka atkarok'a. Noa do ackage arankate nañdri bhitrirete phoson mucadok'a. **k'** do ac' moto sashin rupre do ohoge ucran darelena.

**c'**- Noa arañ hō onkage nañdri bhiri khon ođokkate ackage mucadok' leka ar cetan đata taru phedre alan nase macha jak' nokkate ackage moca bhiri phoson mucadok'a.

**t'**- Noa hō onkage arañ mucadok' leka atkarok'a ar cetan đata phedre alan rakap'kate nasenak' jag tuluc' ackage moca bhirirete hoe do phoson mucadok'a. Noa hō sabad são milaukatege ucranok'a.

**p'**- Noa hō onka kangea. Latar luťi, cetan luťire jopogok' tuluc' ađi nase nok' jag tuluc' ackage arankate moca bhirirete hoe do phoson mucadok'a. **p'** harop ac'

moto sashin rupre ohō ucran darelena. Noa harop do sabad são milaukatege ucranok'a.

**h'**- Noa arañ do ackage h're nañdri khon hoe ođonkate mucadok'a. Menkhan **k'**, **c'**, **t'** ar **p'** khon thora judanok'gea. Moťa-muťi **h'** arankate nañdri bhitrirete ackage phoson mucadok'a.

Disa doho : Metakme **k'**, **c'**, **t'**, **p'** ar **h'** harop do ac' moto do sashin rupre ohō ucran darelena, bickom sabad são milaukatege ucranok'a.

**ñ**- **ñ** reak' ucran do cot alan ulťaute laťic' rakap'kate bhiri norom taru cot alanťe jak'kate hoyokkana. Noa mũ arañ Haťinok' Harop do **t'**, **th**, **d**, **dh** sãoge hec' dareka ar ona hō noa harop reak' thik eñđege lahare hijukkana, jemon -  
**oñđe** (there), **kañťa** (throat), **biñťi** (kind of knife), **añđic'** (seduce), **gañđke** (a log), **oñđga** (ogre), **gũđri** (a quail), **kuñđlan** (lie down), **muñđhať** (stump of a tree, log), **kañđwer** (a certain tree), **kohñđa** (pumpkin), **khokñđo** (ill conditioned), **bharñđo** (whirlwind), **phupñđa** (mouldy), **bhosñđo** (slovenly), **ghañťi** (bell), **Jharkhañđ** (name of a state in India).



## SANTALI HAROPMALARE BEOHARAKAN HAROPKO REAK'UCRAŃ GUN

**a, ą, e, ę, i, o, ɔ, ɒ, u** ar mũ-moca aŃan sodor laġit BeħaŃiŃok' Harop cetanre ' ~ ' cinħa ko lagaokkana; metakme **ã, ą̃, ẽ, ę̃, ĩ, õ, ɔ̃, ũ** emanko.

Santali parsire ĤaŃiŃok' Haropko do turui dhara reak'haropko menaka :-

1. Tarko AŃan (voiced);
2. Betarko AŃan (voiceless);
3. Āt AŃan (Aspirated);
4. Nase AŃan (Non-Aspirate);
5. Mũ AŃan (Nasal); ar
6. Keceť AŃan (Checked consonants).

1. Tarko AŃan - **g, gh, ń, ɖ, ɗh, ɳ, d, dh, n, b, bh, m, y, r, ʃ, ʃh, l, v, w, h, nh, yh**
  2. Betarko AŃan - **k, kh, c, ch, ʈ, ʈh, t, th, p, ph, s**
  3. Āt AŃan - **kh, gh, ch, jh, ʈh, ɗh, th, dh, ph, bh**
  4. Nase AŃan - **k, ń, c, j, ń, ɳ, ʈ, ɖ, t, n, p, b, m, y, r, ʃ, l, v, w**
  5. Mũ AŃan - **ń, ń', ɳ, m, n**
  6. Keceť AŃan - **k', c', ʈ', p', h'**
- Cetan reak'haropko do eae (7) dolre ĤaŃiŃakana :-
- (i) Cetan jambe aŃan (glottal) **h, h'**
  - (ii) NaŃdri aŃan (velar guttural) **k, kh, g, gh, ń, k'**
  - (iii) SamaŃ ʃaru aŃan (Palatal) **c, ch, j, jh, ń, y, c', yh**
  - (iv) ʃaru aŃan (Cacuminal cerebral) - **ʈ, ʈh, ɖ, ɗh, ʃ, ʃh, ɳ**

- (v) ɗaŃa aŃan (Dental) **t, th, dh, n, nh, r, l, ʈ'**
- (vi) Luťi aŃan (Labial) **p, ph, b, bh, m, v, w, p'**
- (vii) Gasaok' aŃan (Sibilant) **s**

NaŃdri AŃan (velar) dol reak' sanam harop reak' ucran gun miť-miťte latarre emogokkana

**k** - **k** do nase aŃan ar betarko aŃan kana. Santalire **k** aŃan reak' ucran do noŃka hoyokkana alaŃ reak' tayom Ĥište cetan reak' norom (labiť) ʃaru dabaoetkana ar moca reak' ođokok' hoye akoťetkana.

Noa **k** do sabad reak' etohop', tala ar mucaťre hijukkana. Ar noa saote **ʈ, ʈh, ɳ, ʃ, t, n, r, l, y, w** ar **s** do lahare taħenkangea, miť bar sabad chađakate.

NaŃmuna

**kan, kul, koŃa, kurud, hako, hũk, lakħa, Ĥakrao, ĤaŃdo, siťrić', cakta, Ĥaknuć', sekrec', kekleset', Ĥokyo, sakwa, loksan, thokŃe, koħŃa, kombŃo, kaťkom, kabra, kaera eman.**

**kh** - **kh** do **k** reak' āt aŃan ar betarko aŃan kana. Santalire **kh** aŃan reak' ucran do noŃka hoyokkana noa do **k** reak' aŃan lekage alaŃ reak' tayom Ĥište cetan reak' norom (labiť) ʃaru dabaoetkana. Menħan moca reak' ođokok' hoe āťŃok' akoťkate ucran aŃanokkana. **kh** do sabad reak' etohop' ar talarre hijukkana, mucaťre do baŃ ar noa saote lahare **ʃ, n, r, l** ar **m** hijukkana.

Partul-

**khan, khet, jokhec', akhra, cikha, bakhra eman.**

**g** - **g** do nase arañ kana ar tarko arañ hõ kana. Noa reak' ucran do nonka hoyokkana alan reak' tayom hīs reak' alan, taru reak' norom hisa jaknokkate moca reak' hoye akotetkana. Menkhan odokok' hoe do tarkokkana se gondrao nogokkana. Ona iatege noa do tarko arañ do manaoakana. **g** do sabad reak' etohop', tala ar mucafre hijukkana ar noa **g** do **j, d, dh, n, r, l, m** ar **w** saote lahare hijukkana.

Partul-

**gel, gol, guhum, laga, rag, mag, kagji, rogdo, digdha, bhagna, lagti, pagra eman.**

**gh** - Noa do at arañ kana ar tarko arañ hõ kana. Noa reak' ucran do alan reak' tayom hīs reak' alan, cetan taru reak' norom hisa jaknokkate at macha moca reak' hoye akotetkana. Ar odokok' hoe do tarkokkana se gondrao nogokkana. **gh** do sabad reak' etohop' ar talare hijukkana, mucafre do ban. Noa **gh** do **r** saote lahare hijukkana.

Partul-

**ghal, ghao, taghen, riggi, aghrao eman.**

**n** - **n** do nandri arañ dol reak' mū arañ kana. Santalire noa arañ do etohopre do ban hijuka. Noa do eken sabad reak' tala ar mucafre hijuka. Tinre noa **n** talare hijukkana, **tobe** noa reak' ucran do adom jokhec' do **n** leka hoyokkana. Menkhan sanam hor' mi' leka bako ucranetkana. Adomko do **n** ko ucrana ar adomko do **n**. Disa dohoe jarukana je **n**

re do **g** reak' ucran do mesalake tahekana. Disa dohokak' jarukana jeleka- **onka, enko, onko** emanre do **n** ge lagaoka **n** do ban. Adom jaegare **n** bodolte **n** hõ anjomokkangea. **n** do asokaete **k, kh, g, gh** lahare hijukak' harop kana. Adomak' mi' bar sabadge nonkanak' namokkana, oka do **t, r, t, d, n, m** ar **s** saote tahekana.

Partul-

**ban, bana, enan, lan̄ta, konka, tirin, en̄ga, dan̄gra, on̄so, kan̄kha, kandor, gon̄gha, gun̄gra, ban eman.**

**k** - **k** do nandri arañ dol reak' kecef' hatinok' arañ kana. Noa arañ do moca khon odokok' hoe nandri bhitrireg adha do jom ruarkef' leka bhitrireg tahē ruaroka ar adha do nandri bhitrireg phoson mucadoka. **k** do ac' moto sadhin rupre ohoge ucran darelana. Noa reak' arañ do ac' pheḍ reak' behatinok' arañre tehad' menaka se ayuroka. Noa do bejivianak' niṭ lalaiak' tayom jorao (ak) do oko kurai reak' okte (tense) tayom bejivianak' lagit' hõ beoharokkana ar kami kajnumre (active verb) hõ hoyokkana (ak). Ar hukum ayatre bejivianak' oko kurai saoteakre hõ (ak') lagaokkana. Noa **k** do menjon' ayat reak' kajnum, **beniṭ** se bhābisot' ayat reak' kajnum sabad akarjao rup (-k')re ar adom jokhec' do haḥatin' lekha (-k) tala jorao (infix) rupre hijukkana. Partul- ak' bogeak' (bejivianak' niniṭ lalaiak' tayom jorao), **aguaka, olakafak'** (niniṭ lalaiak' tayom jorao), **dulakme** (hukum ayatre tala jorao), **juṭucakae** (bhābisot' ayat) **ben̄geṭakkan tahēkanako** (bejivianak' lagit' oko kurai inam, ind, ob.) **ok'** (bekami kajnum tayom jorao (passive verbal suffix),



Jeleka-

**sorosokkanae, idik', ikak', sorok'**

**kak'** - gidikakme, laikakkanan' (hukum kajnum)

**kok'** - thirkokae (benit bhabisot rup)

**lak'** - rorlakae (pahil hoyakanak'okte reak'-anterior past)

**kok'** - emkokam (benit bhabisot rup-indirect object)

**k'** - okol, ukur, eker (sabad beknao rup)

**ikirae** - (hahatin lekha (distributive number)

**akakrin'**, (sabad benao rup) **bikcar, bak'nao,**

**koknga, tikirpit, gokro, bak'ndi** (sabad benao rup)

**ok', rok', uduk'** (kamie kajnum rup)

### Taru Aran Dol (Palatal)

**c** - **c** do tala tarute aranok' harop kana. Noa do nase aran harop ho kana. **c** do alan reak' tala histe ketec' taru thec' hoye akotekana. Ar noa aran do betarko aran ho ko metakkana. Santalire **c** do sabad reak' etohop', tala ar mucafre hijukkana. Partul-

**cal, lac-laca, lecre, acel.** Noa harop do **k, t, r, n, r, l, m** lahare hijukkana.

Partul-

**ackom, bacar, pacra, pocra, picnu', mocra-mucra** eman.

**ch** - Noa do **c** reak' at aran kana ar betarko aran ho kangea. Noa reak' ucran do **c** khon at machatege aranoka, menkhan aran reak' thai do mitgea. Metakme **c** ar **ch** reak' aran thai do mitengea. Noa do sabad reak' etohop' ar talare **r, n** ar **l** lahare hijukkana.

Partul -

**bachri, chal, lacha, bachnao, bichnao, pichlau** eman.

**j** - **j** do nase ar tarko aran kana. Noa harop do tala alan, cot ketec' taru thec' hoe akotkate thora tarkonokkate hoe do moca bahrete odokokkana. **j** do tala alan ar cot taru reak' ketec' hisa talare aran thora gondrao (vibrate) odokokkana. Noa aran do nase aran ho kana. **j** do sabad etohop', tala ar mucafre hijukkana.

Partul-

**jel, ajare, raj** eman. **j** do **g (j) r, n, r, l, b, m** ar **w** lahare hijukkana.

Partul-

**ajgut, gijri, bajra, jojnao, bujri, hejlec', khijlau, ajbajao, ajmao, gajwak'** eman.

**jh** - **jh** do tarko at aran kana. **jh** do **j** reak' at aran kana. Noa do **j** khon do thora atge aranoka. Ar banar reak'ge ucranok' thai do mitcegea. Eken aran reak' at ar naserege benegar menaka. Noa do tarko aran ho kana. Noa harop do sabad reak' etohop' ar talare hijukkana.

Partul-

**jhik, jhal, jhol, bojha** eman. Noa harop do **r, n, l** ar **m** lahare hijukkana,

jeleka-

**ojhrao, lijhra', ajhnao, ujhla** eman.

**n** - **n** do taru aran dol reak' mu aran kana. Ar nase aran ar betarko aran ho kangea. Noa reak' ucran do taru then tala alante akotkate adomak' moca reak' odokok' hoe mu horte

hoye pãerëyetkana ar ona reak' arañ do thoṛa mũte hõ hoyokkana. Ar ona iate noa do mũ arañ hañinok' harop hõko metakkana. Noa harop do sabad reak' etohop', tala ar mucaṭre hijukkana,

jeleka-

**nel, len, teñan, anu** eman. **n** do sabad reak' **c, j** ar **jh** lahare hijukkana.

Partul-

**ancar, anjle, manjhi, manjhla, monj, anjom, kharca, panja** eman.

**y - y** do khula tala taru gasaok' arañ kana ar tarko arañ hõ kangea. Coṭ alan thoṛa laha sec' dhilnokkate latar reak' saman daṭa sec'ete hoye odoketkana. Tala alan cokronokkate ar taru horte sakra-sakrate hoye bahreyetkana.

Noa **y** do hahara (hirkha/raṣka/bhabna/aris katha sodoretre hõ beoharokkana),

jeleka-

hijukme **yai! e yai!** men **yai!** daṛme, daṛ nurukkana. Noa do sabad reak' etohop' tala ar mucaṭre namokkana,

jeleka-

**yai, ya; uniye, ayur, yona** eman. Adom jokhec' barea behañinok' harop miṭ ucran lekae (diphthong) kami khan tobe y leka hõ ucranokkana,

jeleka-

**gai** (gay) **gai gupiyic'** (gupieic'); **laiefae** (layetae).

**yh - yh** do y reak' aṭ arañ kana. Ar tarko arañ hõ kana. **yh**

ar **y** reak' arañ ṭhai do miṭgea. **yh** do **y** khon thoṛa aṭnok' tarko arañoka ar gondraoate hoye odok bahreyetkana. **yh** do eken sabad reak' talarege namoka etak' thec' do ban, jeleka kurhiyha (kuriyha).

**c'** - **c'** do taru arañ dol reak' kecet' hañinok' arañ kana. **c'** do ac' motore sadhin rupre ban ucranoka. Noa **c'** reak' ucranre hoe do aḍi nase bainokte ackage ucran mucadokkana, adha do odoken leka ar adha do bolo ruaren leka ucranoka. Ar **c'** do taru then calaokate hoe aḍi nase paromok' leka aikauka.

## Bhritri Taru Arañ Dol (Cacuminal Cerebral)

Taru Arañ dol reak' noa sanam harop reak' ucran do coṭ alan tayom sec' laṭic' ruarkate cetan tarui jotet' nam tuluc' moca reak' hoye akotetkana. Santali reak' noa arañ do alan cetan tarure ulṭaunokkate kirbiṭ rakab tuluc' coṭ alan tarui jak' namekana.

**ṭ - ṭ** do bhritri taru arañ dol reak' betarko arañ kana ar nase arañ hõ kana. **ṭ** reak' ucran do coṭ alan ulṭaute laṭic' rakapkate latar nakha reak' alan hañin saman taru thec' rakapkate hoe akot' tuluc' odok ocoakkana. Noa harop do sabad reak' etohop', tala ar mucaṭre hijukkana.

Partul-

**tuar, totok, rote, laṭ, haṭ, chaṭka, caṭki, muṭi, chuṭki, chṭkiric'** eman.

ṭ do **k, ɾ, n, r, l, b, v, w** ar **m** lahare hijuk'a,  
jeleka-

**toṭko, koṭko, koṭrē, kaṭra-kuṭra, baṭvi, jhaṭwa-jhaṭvi.**

**ṭh** - **ṭh** do āṭ araṅ ar betarko araṅ harop hō kana. Noa reak' ucran do ṭ leakage hoyok'a, menkhan āṭge araṅok'a. Ucran ṭhāi do miṭgea. Noa harop do sabad reak' etohop' ar talare hijuk'a, mucaṭre do baṅ hijuk'a. Ar **ṭh** do sabadre **r, n, ɾ, l, w, ŋ** lahare hijuk'a.

Partul-

**ṭheṅga, ṭhak'-ṭhok', reṭhe, kaṭhṅau, aṭhrē, kaṭhli, kuṭhri, aṭhwar, kaṭhar eman.**

**ḍ** - **ḍ** do bhitri taru araṅ dol reak' tarko araṅ ar nase araṅ kana. **ḍ** reak' ucran do ṭ leakage hoyokk'ana, menkhan tarkoate hoe do moca bahreṭey oḍok ocoak'kana. Noa reak' ucran ṭhāi do ṭ ar **ṭh** leka miṭ ṭheṅge hoyokk'ana. Noa harop do sabad reak' etohop', tala ar mucaṭre hijuk'kana. **ḍ** do sabadre **g, n, r, l, b, v, w** ar **m** lahare hijuk'kana.

Partul-

**ḍaṅ, geḍe, haḍgar, gaḍ-guḍ, guḍṅa, buḍruc', uḍli, guḍma, kuḍbur, ṭiḍvi eman.**

**ḍh** - Noa do **ḍ** khon begargea. **ḍh** do **ḍ** reak' āṭ araṅ kana. Noa do āṭ araṅ ar tarko araṅ kana. Noa reak' ucran ṭhāi do **ṭ, ṭh, ḍ** leka miṭ ṭheḍgea. Noa harop do sabad reak' etohop' ar talare hijuk'kana, mucaṭre do baṅ hijuk'kana.

Partul-

**ḍharwak', ḍaḍhiṭ eman.**

**ṅ** - **ṅ** do bhitri taru araṅ dol reak' mū araṅ harop kana. Noa do tarko ar nase araṅ hō kana. Noa reak' ucran do coṭ alaṅ laṭiḥ rakap'kate bhitri taru ṭhen taru ṭuṅdu tiak'kate hoye akoṭeṭ'kana. Bhitri reak' coṭ norom taru ṭhen hoe akoṭ'kate adomak' hoe do mū hortey pāerē goṭkakk'ana ar thoṛa mūte hō araṅok'kana. Ona iatege noa harop do mū araṅ harop ḍoko metak'kana Noa do **ṭ, ṭh, ḍ** ar **ḍh** lahare hijuk'kana. **ṅ** do eṭak' dol reak' harop sāote baṅ heḥ' daṛeak'a se noa dol reak'ge **ɾ** lahare baṅ hijuk'a.

**ṅ** do sabad reak' etohop're do ekalte baṅ hijuk'a **ṭ, ṭh, ḍ, ḍh** lahare heḥ'kate benaok' sabad - **jhaṅṭi, raṅḍi, maṅḍi, haṅḍi, jaṅḍi, koṅḍa, mohṅḍa, biṅṭhi, aṅḍiḥ, gaṅḍke, oṅḍga, guṅḍri, kuṅḍlaṅ, muṅḍhaṭ, bhārṅḍo eman.**

**ɾ** - **ɾ** do nase araṅ ar tarko araṅ kana. Noa reak' ucran do coṭ alaṅ cetan reak' keṭeḥ' taru seḥ' ultau rakap'kate hoye akoṭeṭ'kana, menkhan taru do nasenak' baṅ jak' nāmok'kana. Coṭ alaṅ cetan taru ṭhen laṛaok'a, taru do bae tiaga ar moca reak' hoe do coṭ alaṅ cetan-cetante parom calak'a. Santalire **ɾ** sabad reak' etohop're do ekalte baṅ hijuk'a. **ɾ** do sabad tala ar mucaṭre hijuk'kana.

Noa do **h, k, g, ŋg, c, ch, j, jh, y, n, t, d, dh, n, r, p, b, m, v, w** ar **s** lahare hijuk'kana.

Partul-

**laṛhai, ārgo, eṛeḥ'-eṛeḥ', paṛchau, hārjaṅ-hurjuṅ, koṛṅje, eṛjhe-beṛjhe, geryom, kēryōṭ', bārṭi, kaṛdhup'-kaṛdhup',**

khãrduk', korra, larpe, harbuñ, hořmo, bẽrbak', gharvi, kãrwãt', gharwa, orsa, arak' eman.

**řh - řh** do ř reak' ãt arañ kana ar tarko arañ kana. Noa reak' ucran do ř leka hoyokkana ar ucran řhãi hõ miřengea. Menkhan řh do ř khon ãtge ucranokã. řh do sabad reak' talarege hijukã ehop' ar muçatre do ban hijukã.

Partul-

kurhia, burhi eman.

### Data Arañ Dol (Dental)

Noa do ðata arañ dol reak' harop kana. Noa reak' ucran do coř alaň reak' latar nakha hisate cetan ðata goňða řen senkate hoye akotẽkana, tobege noa dol reak' harop do řhik-řhik ucran dareakkana.

**t - t** do nase arañ (unaspirated) ar betarko arañ kana. Noa do cetan ðata reak' bhitri nakhare alaň jagokã ar hoe akotẽkate t reak' ucranokkana. Coř alaň cetan ðata řen senkate hoye akotẽruaretkana.

t do sabad reak' etohop', tala ar muçatre hijukkana ar noa harop do k, ř, n, r, l, b, m, w ar v lahare hijukkana.

Partul-

ãtkir, botke, bhotro, atnak', citri, atruñ, hatlak', gutlu, matbor, etbar, thutma, hatwa-hãtvi, tetã, ti, itil, bat, bhit, bitkil, matkom, catra, patra, ghatra, jatra, khunta eman.

**th - th** do sabad laha ar talare hijukãk' ãt arañ ar betarko

aran kana. Noa do t reak' ãt arañ kana. t leakage noa reak' ucran řhãi do miřengea. Menkhan th reak' ucran do t khon do jãstigea ar ãtnokge arãnokã. Santalire noa harop do etohop' ar talare heçkate ř, n ar r lahare hijukã.

Partul-

tho, lathak', lethrec', kothne, muthni, gendrec'-cethrec', thokre, thapram, thothoř, thapram eman.

**d - d** do nase arañ ar tarko arañ kana. Noa do Santalire bhitri nakha cetan ðata řen coř alaň senkate alaň jalatnokkate hoye akotẽkana, menkhan noa reak' arañ do gondraonogokkana. Noa harop do sabad reak' etohop', tala ar muçatre hijukkana ar g, ř, n, l, m ar w lahare hijukkana.

Partul-

ðad, dada, dhadra, hodgo, ludgup', gudri, ledref', khudni, udgar, ada, edre, udri, khadle, dhodlo, adwa eman.

**dh - dh** do sabad etohop' ar talare hijukãk' ãt arañ ar tarko arañ kana. Noa do d reak' ãt arañ kana. dh reak' ucranre do d khon do ãtnokge hoyokã ar d ar dh reak' ucran řhãi do miřgea. Noa harop do sabad reak' etohop' ar muçatre heçkate ř, n, r, m lahare hijukã.

Partul-

dhar, dhedre, badha, odhrao, ledhra, godhnao eman.

**n - n** do ðata arañ dol reak' mũ arañ harop kana. Santalire noa reak' ucran do coř alaň cetan ðata řen rakapate moca reak' hoye akotẽkana. Noa do nase arañ ar tarko

arañ hō kana. Noa reak' ucran do ekal cetanre ḍaṭa then rakap̄kate ucranok' nonkan katha hō bañ kana, bickom cetan ḍaṭa then khon thoṛa paḷaṅok' coṭ alaṅte jagokkana.

**n** do sabad reak' etohop', tala ar muḇaṛe hijuk'a ar **h, k, kh, g, t, th, d, dh, w** ar s lahare hijuk'a.

Partul-

**nanha, bana, cun, janhe, nonkan, chingau, jante, kantha, cūnd, dundu, nīndir, gendrec', endrae, khandlak', khandri, sendra, kandha, andhra, gandhua, pondhar, janwar, banwār, ansa, gunsī eman.**

Santalire Inḡraji parsi khon miṭ bar nonkan sabad hec' boloakana ar Santali reak' sobhab lekate Santalire aḍi jaṣti beohar hec'akana. Aḍo noare miṭ lekanak' sabad reak' haropre bonodol nēlogokkana. Inḡraji reak' n do Santalire l bodolokkana ente noa do Santali reak' sobhab ar gun kana ar noa do Inḡraji khon Baṅglate boloena ar inaḷate bai-baite Santalire hō beoharok' ehopena se Inḡraji khon Hindire boloena ar inaḷate Santalire bolo tapena. Ar noa bonodol do sabad reak' etohop' ar talare hoyokkana.

Partul-

**lil** do **nil** laḡiṭ bodolena; **loṭ** do **note**; **pilsin'** do **pension**; **lalṭon** do **lantern**. Menkhan aḍom jokhec' do l khon **n** re bodolokkana. Partul - **list** do **nisti** laḡiṭ bodolokkana.

**nh** - **nh** do āṭ arañ ar tarko arañ kana. Noa reak' ucran do **n** leakage hoyokkana ar ucran ṭhāi hō miṭgea. Menkhan **nh** do thoṛa **n** khon do āṭnokkatege ucranokkana. **n** leakage

moca reak' hoe akoṭkate thoṛa do mū hortey pāeṛēyētkana. Noa harop̄te sabad benaokkan khan Isara Ujnum ar Isara Kajnum Gunum reak' kamiefkana, jeleka nhui, nhai, nhande, nhako, nhak'ai eman. Judi noa talare hijukkhan **n** leka nase arañ anjomoka, jeleka- nonka.

**r** - **r** do nase arañ ar tarko arañ kana. Noa harop̄ reak' ucran do coṭ alaṅ paḷa sec' hoye parom ocoe tuluc' sosrocko rag leka alaṅ thar tharaoka ar **r** reak' ucran hoyokkana. Coṭ alaṅ cetan ḍaṭa thenak' maṣkura then calaokate ucranokkana. Coṭ alaṅ cetan cokronokkate metakme kaṭic' camoc leka khāidukkate moca hoye akoṭētkana.

Santali parsire **r** do sabad etohop', tala ar muḇaṛe hijukkana.

Partul -

**rici, rō, or, deren'** eman.

**r** do **h, k, kh, g, ṅg, c, ch, j, ṭ, th, ṇḍ, r, t, th, d, dh, n, l, p, ph, b, bh, m, v, w** ar s lahare hijukkana; **ḍ, r** ar **nī** chadakate.

Partul -

**darha, nūrha, murhuc' (murhut), jom, parkom, caṛkhi, urgum, jarge, kharṅgao, sarṅga, barchi, aṛji, sarjom, corṭha, purṭha, bharṅḍo, kurṅḍa, ghirni, gharra, harta, dharti, bertha, ardas, terdec', kirdhum, jharna, birni, orlo, borlom, khorlon, arpa, kurpha, barphai, narba-kharba, garbha, urmal, jarmak' tormak', sormboṭ, ervel, orwal,**

parwa, arsi, marsal, bursi eman.

l - l do nase arañ kana ar tarko arañ hõ kana. Noa reak' ucran do coṭ alaṅ saman reak' cetan ḍaṭa then calaokate hoye akoṭetkana ar alaṅ etom-kõyẽ seṭe moca reak' hoe do oḍonokkana. Noa arañ do betarko arañ leka hõ aṭkarooka.

Santali parsire noa do sabad etohop', tala ar mucaṭre hijukkana,

jeleka-

lil, lin, saḷ, bale eman.

l do h, k, kh, g, ṅg, c, ch, ṅj, ṭ, ḍ, ḍh, t, d, dh, n, p, ph, b, m, v, w ar s lahare hijukkana.

Partul-

leha, lula, telhec', lilkar, paḷkui, alga, kulkhi, ulku phulku, ulkha ulkhi, laḷci, pilcu, telṅjo, ulṭa palṭa, khildu, ulḍha, belteṅ, caldha, silpiṅ eman.

ṭ - t do ḍaṭa arañ dol reak' keceṭ behaṭinok' harop kana. t reak' ucran do coṭ alaṅ seṭe paromok' hoe aḍi nasenaḷ aikauka. Alaṅ mucaṭ hoe hec' heṭe ackage phoson mucaṭenge. Noa arañ do adha ulaḷkeṭ leka ar adha do jom ruarkeṭ leka ucranoka. ṭ do kajnumre lagaok' tayom jorao kana. Noa do Behaṭinok' Harop tayomre asokaete takenkana.

Partul-

aṭ, goṭ, maṭ, oṭ, uṭ, mēṭ, mucaṭ, laṭ, siṭ, miṭ eman. eṭ, eṭ, keṭ, keṭ, leṭ, leṭ, akat, aṭ, kaṭ ko do kajnum tayomre lagaok'

tayom jorao kana.

## Luṭi Arañ Dol (Labial)

p - p do luṭi arañ dol reak' nase arañ ar betarko arañ kana. Noa harop do moca reak' adomak' hoe cetan ar latar luṭitey akoṭetkana ar ackage luṭire posaken leka hoe oḍokokkana.

Noa harop do sabad reak' etohop', tala ar mucaṭre hijukkana. Ar k, c, t, ṭ, ṭh ṅḍ, ṛ, t, n, r, l, s do p lahare hijukkana.

Partul-

panahi, parkom, apnar, apat, lapre, lap-lapa, upkar, ḍopkoṭ, gapca, hiptic', ceṭe, apṭhao, phupṅḍo, hapta, suptic', aprē, epre, haprak', jhapni, pipni, aprār, eper, upria, thara-thopre, thapra, aple, ṭuplak', bapla, opsor, lipsa, jhopsa eman.

ph - ph do luṭi arañ dol reak' aṭ arañ kana ar betarko arañ kana. Noa reak' ucran do p leakage hoyokkana, menkhan p khon do aṭge arañokkana ar ucranok' ṭhāi do miṭgea. ph do sabad reak' etohop' ar talare hijukkana, menkhan aḍi komge sabad mucaṭre do hijukkana.

Partul-

phepra, phākṛāk', uphṅau, haphsao, phuṭ, phūrūk', phurkau, phala, phāuti, pharak, phaudari, dhapadar emanko.

**b** - **b** do tarko arañ ar nase arañ kana. **b** reak' ucran do **p** khon do thoṛa luṭi then tarkoṅogokkana ar arañ do moṭa ṅogokkana. Noa harop reak' ucran do banar luṭi sarpa miṭkate tarko machawate moca khon hoe doe oḍok ocoakkana.

Noa harop do sabadre etohop', tala ar mucaṭre hijukkana, jeleka - **bar**, **baber**, **baba**, **lebra**, **lob**, **ub**, **dhob** eman. Noa harop do **k**, **g**, **j**, **ḍ**, **ḍh**, **ṛ**, **d**, **dh**, **n**, **r** ar l lahare hijukkana.

Partul-

**dabka**, **abge**, **objos**, **kabjui**, **kabjho** (jh lahare hō hijukkana), **jobdhao**, **jobḍhao**, **khabrāha**, **jambṛe**, **babṛē**, **thubrā**, **labda**, **kuḍḥa**, **labdhao**, **obra**, **kabra**, **gubri**, **khablok'eman**.

**bh** - **bh** do luṭi arañ dol reak' āṭ arañ ar tarko arañ kana. Noa reak' ucran do **b** leakage hoyokkana, menkhan banar luṭi then hoe do raṅgaonok' thuen leka arānokā. Noa reak' ucran do **b** khon do āṭge arānokā. Noa reak' ucran ṭhāi do **b** ar **bh** do miṭgea eken āṭ arañ ar nase arānrege begar do menakā.

Noa sabad reak' etohop' ar talare hijukkana,

jleka-

**bhalai**, **bhagao**, **lubhi**, **bhugak'**, **abhran**, **libḥar**, **libhrā** eman.

**m** - **m** do luṭi arañ dol reak' tarko arañ, mū arañ ar nase arañ kana. Noa reak' ucran do banar luṭi bondkate moca

reak' hoe akoṭkate norom taru seṭe thoṛa hoe do mū hortey pāerēyetkana ar thoṛa komṅok'ge moca khon do hoe oḍokokkana.

Santalire noa **m** do banar arānge nāmokkana, metakme tarko arañ ar betarko arañ. Judi noa harop sabad etohop' ar talare heḥlen khan betarko hoyokkana ar mucaṭre heḥlen khanre hō betarko hoyokkana. Ar adom jokhec' do haṭinok' harop lahare ar mucaṭre heḥlen khan betarko arañ leka arānokā,

jleka-

**ma**, **mama**, **am**, **ram** eman.

**m** harop do **h**, **k**, **g**, **c**, **ch**, **j**, **jh**, **ṭ**, **ṭh**, **ḍ**, **ḍh**, **ṛ**, **t**, **d**, **th**, **n**, **r** (br), **l** (bl), **p**, **ph**, **b**, **bh** ar s lahare hijukkana.

Partul-

**kamhai**, **gamhāṇḍ**, **dumhē**, **gomke**, **cemkec'**, **jamki**, **ḍamgi**, **ḍemcok'** (ḍheṅcok'), **humcak'**, **gamcha**, **lamjak'**, **ramjau**, **umjhau**, **ṣamjhau**, **humṭak'**, **amṭha**, **cemḍen'**, **kumdhuc'**, **kamṛi** (kaṛmi), **umṭa** **umti**, **amdaj**, **umdhi**, **omne**, **ṭamni**, **amrit** (ambrit-papaya), **amla**, **mamla** (mambla), **campa**, **ampa** **ompo**, **lampha**, **campel**, **ombak'**, **kumbeṭ'**, **jhumbri**, **hembrom**, **kombro**, **jambro**, **kumḷau**, **bambkao**, **sambhe**, **kambhao**, **kumbhir**, **gambhra**, **amsam**, **rimsic'**, **dhumsa** eman.

**v** - **v** do khulā ḍaṭa luṭi arañ kana. Noa do tarko arañ ar nase arañ hō kana. Noa harop reak' ucran do latar luṭi reak' bhitri hisaṭe cetan reak' samañ ḍaṭa jak' nāmKate moca

reak' hoe doe akotefkana.

**w** - **w** do tarko arañ ar nase arañ kana. Noa harop reak' ucran do latar luṭi cetan reak' saman ḍaṭa bae jak' namerkana. Cetan ḍaṭa aurie jak' namrege pharak lahakkana. Noa do khula luṭi arañ kana. Noa arañ jokhec' luṭi do ekal bañ cokrakkana. Adom hor do v ar w reak' begar baḍae bañ iate v jaegare w hōko beohareda ar adom jokhec' do w jaegare v hōko larcaṛefkangea. Noa do bhulogokkana ente banar reak' ucran gun begargea. Menkhan noa hō miṭṭen katha v do adom jokhec' bh leka hō arānok'gea, metakme āṭ arañ leka.

v ar w do sabad reak' talarege, ar bañ khan barea behaṭinok' harop talare hijukā se talare haṭinok' harop lahare hō ar ina ac' tayomre behaṭinok' harop hijukā.

Santalire v ar wte do sabad bañ ehobokā. Barea behaṭinok' harop talare hijukā, jemon-  
jivi, jiveṭ, liveṭ, ever, nāwā, rāwāo eman.

v ar w do k, g, c, j, ṭ, ṭh, ḍ, ṇḍ, ṛ, t, d, n, r, l ar s tayomre hijukā.

Partul-

sakwa, sagwan, kacwan, gajwak', leṭweṭ, paṭwa, aṭhwar, ṭiḍvi, maṇḍwa, liwā lawe, latwak', adwa, manwa, parwa, palwa, aswar eman.

w ar v do Santali sabad reak' etohop' ar mucaṭre bañ hijukā.

**p'** - **p'** do keceṭ luṭi arañ kana. **p'** do **p** reak' lekage ackage arañ mucadok' harop kana. Noa harop do **k', c', ṭ' ar h'** lekage **ac'** motore sadhin rupre do bañ ucranokā. Sanam keceṭ haropge **ac'** motore do bañ ucranokā, bickom sabad são heckatege ucranokā, menkhan noa reak' arañ do bañ lekage anjomok' leka aikaukā, metakme adha do ucrankeṭ leka ar adha do jom ruarkeṭ leka atkarokā.

**p'** do sanam behaṭinok' harop tayomre hec' dareaka se hijukkana.

Partul-

lap', ap', sap', lep', selep', rup', thep', dep' dep', thop' thop', dhop' dhop', cip' cirip', kap' kop' eman.

**k', c', ṭ' ar p'** reak' g, j, d, bre bodolok' reañ

Tinre sabad mucaṭre kajnum (verb) rupre keceṭ haropko beoharokā ar ona do jos kajnum (transitive) reak' manere larcaṛokā ar onare kajnumanak' okte tayom jorao (verbal tense suffix) joraoenre ar onare kuṛai tayom jorao (object suffix) takenkhan, metakme in' ar e beoharlen khan tobe ṭ' do d bodolok'

Partul-

**ṭ'** - in' ar e são, **leṭ-in'** (kuṛai tayom jorao (object suffix)

**leṭ'** (a) (kajnum okte tayom jorao jorao kuṛai tayom jorao, (verbal tense suffix obj. inf.)

**siṭ'** (a) -e (verbal tense suffix obj. inf.)

**siṭ'in'** (verbal tense suffix obj. inf.)



ƒ do dre unre bodolokkana tinre bħabisot okte (future tense) ar hukumanak' ayat reak' kajnum (Imperative sentence with verb) sãote sodor bejivianak' kurai (direct inanimate object) são heclen khan ar sodor jivianak' kurai tayom jorao (direct animate object infix) heclenre hõ ƒ khon dre bodolokkana. Ar noa do kamia pahil hor (first person) ar etak' hor (third person) miƒ bar, sanġe lekha taken khan hoyokkana.

Partul -

siƒ + a + n' = sidan' (bħabisot okte-(First person singular number)

siƒ + a + e = sidae (-do- Third person singular number)

siƒ (me) = sidme (hukum) sodor bejivianak' kurai

(i) Adom jokhec' judi bekami kajnum (passive voice) tayom jorao (suffix) ok' /ok' heclenre keceƒ harop do purau tarko aran haropre bodoloka. Metamke ƒ do dre, k' do gre, p' do bre, c' do jre bodoloka.

Partul -

geƒ (ok) = gedok'; mak' (ok) = magok'; meƒ (ok) = medok'; up' (ok) = ubok'.

(ii) Tinre tayomre joraoak' tayom jorao (suffix) judi mucaƒre keceƒ harop taken khan ar ona ocoklenkhan purau tarko aran benaokkan khan, tobe ona do mul sabad (root word) leka kamikana

ar ona são ok'/ok' joraoen khan hõ purau tarko aran haropre bodolokkana.

Partul -

inaƒ = inagae; lagit' = lagidok'; lagat' = lagadok'; rinic' = rinijokae

(iii) Kajnumre hijukak' tayom jorao :-

(a) Santali sabadre judi kte mucadok' khan ar ona tayom ok'/ok' menak' khan tobe ona do gre bodoloka. Ar noa do ac' dol reak' haropge heclen khan noa niam do caluka; menkhan kajnumre hoyok' jarurkana.

Partul -

nelok' = nelogok'; geƒ = gedogok'

Ayatre judi katha menjon leka (statement) beoharlenkhan, metakme jahanak' reak' katha badaeokkhan tobe keceƒ harop do ban bodoloka ar ok'/ok' do ban joraoak'.

Partul -

calakin' menlaka; onan' kamikaka.

(b) Judi sabadre bejivianak' tayom jorao (suffix) lagaolen khan k' do ban bodoloka.

Partul -

haramak', rapufak', jelenak', matkakae, makletae eman.

(c) **t** reak' kajnum sãote tayom jorao (suffix) **et**, **ket**, **let**, **kat** ar **akat** tahe<sub>n</sub>khan ar ona tayom **c** ar **in** hec<sub>l</sub>en<sub>n</sub>khan **t** do **d** tarko a<sub>r</sub>an haropre bodoloka, judi **c** ar **in**, **ko**, **ben**, **kin** eman so<sub>d</sub>or ku<sub>r</sub>ai tala jorao tahe<sub>n</sub>khan.

Partul -

**raput'-et'** = **raput'idan**, **raput'edae**,  
**raput'edakin/raput'edaben**, **raput'edako**,  
**raput'-ket'**=**raput'ketan**, **raput'kedae**, **raput'kedakin**,  
**raput'kedaben**, **raput'kedako**,  
**raput'-let'**=**raput'lidan**, **raput'ledae**,  
**raput'ledakin/raput'ledaben**, **raput'ledako**,  
**raput'-akat'**=**raput'akadan**, **raput'akadae**,  
**raput'akadakin/raput'akadaben**, **raput'akadako**.

(d) **t** reak' kajum sãote tayom jorao (verbal suffix) **at** ar **akawat** tahe<sub>n</sub>khan ar ona sãote ujnumanak' ku<sub>r</sub>ai tala jorao (pronominal object infix) tahe<sub>n</sub>khan metak<sub>m</sub>e **e**, **in**.

Partul -

**lai-at'** = **lai-adeae**, **lai-adinæ**  
**lai-akawat** = **lai-akawadean**, **lai-akawadeae**  
**em-at'** = **ema-deae**, **emadian**  
**em-akawat** = **em-akawadinæ**, **em-akawadeae**.

(e) Adom jokhec' muca<sub>r</sub>tre **t** tahe<sub>n</sub>khan ina tayom **a** hec<sub>l</sub>en<sub>n</sub>khan ba<sub>n</sub> hõ bodoloka, kajnum tayom jorao tahe<sub>n</sub>re hõ.

Partul -

**gef-a** = **gef-akatae**, **gef-atae**.

Adom sabad judi **k**te muca<sub>d</sub>ok<sub>k</sub>ankhan ar muca<sub>r</sub> utarak' akhor (last syllable) bu<sub>t</sub>a sabad lekae kamikhan **k** do **g** re ar **c** do **j** re bodolokkana.

Partul -

**ac'** **ajak'**, **lac'** **lajak'** (**dec'** **dejok'**, **sec'** **sejok'**) **mak'** **magok'**, **etak'** **etagak'**.

### Cetan Jambe Aran (Glottal)

**h** - **h** do cetan jambe aran dol reak' ragrao-gasaok' tarko a<sub>r</sub>an ar nase a<sub>r</sub>an kana. Noa reak' ucran do cetan jambe sec<sub>t</sub>e hoe ragrao-gasaoate moca khon hoe odokokkana. Noa harop do Santali sabadre etohop', talare hijuka; muca<sub>r</sub>tre do ba<sub>n</sub> hijukkana,

jeleka-

**har**, **hani**, **hul**, **tahe<sub>n</sub>**, **ohoc'**, **mahle**

**h** do **k**, **g**, **c**, **j**, **n**, **t**, **r**, **d**, **n**, **r**, **l**, **p**, **b** ar **m** lahare hijukkana.

Partul -

**ahkao**, **sohga**, **bahca**, **ohjao**, **mohnjam**, **oh<sub>t</sub>ao**, **kohn<sub>d</sub>a**,  
**kuhra**, **kahtuk**, **rah<sub>d</sub>ani**, **gahna**, **lahra**, **ahlu<sub>n</sub>**, **jahpun**,  
**sohbod**, **ohma** eman.

**h'** - **h'** do cetan jambe aran dol reak' kece<sub>t</sub>' harop kana. Noa do ac' motore do ba<sub>n</sub> ucranoka, eken sabad sao hec<sub>k</sub>atege ucranoka. Noa reak' ucran do **h** lekage hoyokkana, menkhan moca reak' hoe do adha do ackage ucran ruarke<sub>t</sub>' leka aikauka ar adha do ackage ut ruarke<sub>t</sub>'

lekage ucranok̄a. Noa do sadhin rupre ban ucranok̄a.

Noa h̄ do eken miṭ-bar sabadrede namok̄kana, ona h̄o sabad reak̄ mucaṭre.

Partul-

ah̄, uh̄, eh̄, eh̄, leh̄-leh̄

### Gasaok̄ arān (sibilant)

s - s do betarko arān kana. Noa arān oṅdok̄ laḡit̄ do coṭ alaṅ cetan seṭ rakap̄ nok̄kate gasaok̄kana ar hoe do khula oṅdokok̄kana. Noa do Ingraji reak̄ sink, cease s̄ao aḡige jurikk̄kana. Noa s arānok̄ do ḡaṭa arān t, d ar n lekage hoyok̄kana. s do sabad reak̄ etohop̄, tala ar mucaṭre lagaok̄kana,

jemon-

si, so, as, ses, laser eman.

Noa s tayomre do noako harop hijuk̄kana k, ṭ, ṅḡ, ṛ, t, n, r, l, (p), b, m, (mb) ar w.

Namuna-

iskir, uskur, kaskom, raṣka; aṣṭaṅ, ṭeṣṭa; baṣṇḡi, bhosṇḡon; gusṛi, lesṛok̄; esto besto; posta; kisni, dhasna, aṣṛāṭ, sosroc̄, hosroṭ, lasro; h̄aṣli, baṣla, musla; ispat; kosbaṭ; osmao; kasmar, kismot; kesmbet̄, kusmbi; aswar eman.

### Behaṭinok̄ Harop (Vowels)

Santalire menak̄ sanam Behaṭinok̄ harop do tarko arān kana, metak̄me :

a, e, e, i, o, o, u

a, e, o

ā, ā, ē, ē, ī, ō, ō, ū

Noako mod khon adomak̄ do moca motote arānok̄ak̄kana ar adomak̄ do m̄u ar moca banartege. Eken moca motote arānok̄ak̄ Behaṭinok̄ Harop : a, e, e, i, o, o, u, a, e, o

M̄u ar mocate : ā, ā, ē, ē, ī, ō, ō, ū

Noa reak̄ ucranre thoṛa moneak̄ jaṛur̄kana ā, ā, ē, ē, ī, ō, ō ar ū reak̄ ucranre m̄ute do aḡi kom s̄ah̄eṭ oḡokok̄kana ar mocate do jaṣṭige hoe oḡokok̄kana.

### Moca-M̄u Arān Harop (Nasal Consonants)

Adomak̄ haṭinok̄ m̄u arān harop, metak̄me n, ṅ, ṇ, ṅ, m reak̄ ucranre moca reak̄ hoe (s̄ah̄eṭ) m̄ute do jaṣṭi oḡokok̄a ar mocate do komge.

ok̄, ok̄, uk̄. Tayom joraḡo ar k̄ tayom joraok̄ :-

Noa do bekami kajnum (passive verb) s̄aote lagaok̄a. ok̄ ok̄ do sabad mucaṭre haṭinok̄ harop s̄aote mucadok̄khan lagaok̄a.

Jeleka-

ṅam + (ok̄/ok̄) = ṅamok̄, dul = (ok̄/ok̄) = dulok̄.

Buta sabadre judi khula Behaṭinok̄ harop taṅkhan, metak̄me o se e taṅkhan ona tayom ok̄ hijuk̄khan ona do ok̄benaok̄kana.

Partul-

**em = (ok) = emok, ehob + (ok) = ehobok, lebed + (ok) = lebedok.**

u haropante judi miť akhoranak (monosyllabic) buťa sabad tahenkhan tobe ok tayom jořao do ukre bodoloka.

Partul-

nur + (ok) = nuruk, bul + (ok) = buluk, chur + (ok) = churuk, gur + (ok) = guruk.

Buťa sabad sãote mućatre judi miťten behaťinok harop tahenkhan ar noa buťa sabad bekamie kajnum (passive verb) rey kamiekhan tobe onare eken kge lagaoka.

Partul-

laŋga + (-k) = laŋgak, teŋgo + (-k) = teŋgok, agu = (-k) = aguk, idi = (-k) = idik, ere + (-k) = erek, doho + (-k) = dohok, bařu + (-k) = bařuk. Miť akhoran kajnum (monosyllabic) si são do ok hijukkana ar ona do siok se sik hõ hoyokkana.

Jãhã sabad barea behaťinok harop ae, ao se au sãote mućatlenkhan ona sãote bekami kajnum jořao (passive suffix) kge lagaoka.

Partul-

bađae + (-k) = bađaeok, aĩkau + (-k) = aĩkauk, sambrao + (-k) = sambraok, bhiřau + (-k) = bhiřauk, adrao + (-k) = adraok, bhokrao + (-k) = bhokraok, aulau + (-k) = aulauk, lařao + (-k) = lařaok, bujhau + (-k) = bujhauk eman.

Buťa sabad reak dosar behaťinok harop e se i tahenkhan bekami kajnum jořao (passive suffix) ok hijukkana.

Partul-

bađa(e) + (-ok) = bađaeok, la(i) + (-ok) = laiook, bađa(i) + (-ok) = bađaiook, lařhai + (-ok) = lařhaiok eman.

Jãhã sabad tinre keceť haropante mućatlenre ar ona bekami kajnum jořao (passive suffix) ok hećlenkhan ona keceť harop do purau tarko ařanre bodoloka, metakme :

k te mućatlenkhan g benaokkana  
c te mućatlenkhan j benaokkana  
p te mućatlenkhan b benaokkana  
ť te mućatlenkhan d benaokkana.

Noa disai jařurkana je ona keceť harop tayom-ok hijuk jařurkana ar tobeanec bekami kajnume benaotkana.

Partul-

mět + (ok) = medok, mět + (ok) = mēdok, lebet + (ok) = lebedok, lac + (ok) = lajok, bak + (ok) = bagok, sap + (ok) = sabok

Kajnum sabadre judi ok mućatre hećlenkhan ona tayom arhõ ok se uk hećkate bekami kajnum (passive verb) benaokkhan ok do ogok se ogok, se gok se gok noa do ok + ok se ok + ok hećlenkhan hoyokkana.

Partul -

$\acute{n}am(ok) = (ok) = \acute{n}amogok'$

$\acute{n}elo(ok) = (ok) = \acute{n}elogok'$

$\acute{N}umuk' = (ok) = \acute{n}umugok'$

Kami kajnum (active verb) bħabisot okte (future tense) laġit'  $ok'+ok'$  se  $ok'+ok'$  se  $k'+ok'$  lagaokate bekami kajnum benaokkhan ona do **ogok'**, **ogok'** se **gok're** bodolok'a ar mucafre miŧenge beħaŧinok' harop hec'enre se barea beħaŧinok' harop hec'enre ar ona são **k'** takenkhan, tobe  $k'+ok'$  do **gok're** bodolok'a.

Partul -

$emok'+(ok) = emogok'$ ,  $rorok'+(ok) = rorogok'$

Ayat :-

**onka do ban rorogok'a.**

**ban laioka = ban laiogoka.**

**nelokak' = nelogokak',**

**siokak' = siogokak',**

**hoyokak' = hoyogoka,**

**ucranoka = ucranogoka**

Sodor kurai ujnium tayom tala jorao (direct object infix pronoun) pahil hor' miŧ lekha (Ist person singular=in) sãote **keŧ** takenkhan ar **ŧ** do **dre** bodolkate **e** do ire bodolok'a.

Partul -

**dalkidiŋae** ar judi eŧak' hor' miŧ lekha takenkhan **e** do ere bodolok'a jemon- **keŧ** = **dalkedeae**.

$ok'+ok'$  do tinre  $ok'+ok're$  bodolok'a ar  $k'+ok'$  do tinre  $k'+ok're$  se **ogok'** do **ogok're** se **gok'** do **gok're** bodolok'a.

Niam : - Judi buta sabadre khula beħaŧinok' harop metakme **e**, **o** takenkhan ar ona tayom bekami kajnum reak' tayom jorao **ok'** hec'enre tobe **k'** do **gre** bodolok'a ar ona laha-tayom **o** latarre dash (-) lagaoka.

Partul -

**neloka = nelogoka**

$(nel+ok'+oka) + nelok'+ok' = nelogok'$

$roroka + rorogoka (ror+ok'+ok) = rorogoka$

$(jom+ok'+oka) = jomogoka.$

## ROMAN SANTALI REAK' ASOL-ASOL NIAMKO

Olok' reak' an se ari doko metakkana Banan (Spelling). Jãhãtak' parsi reak'ge sanam aŋanko jothat tarikate ucran laġit'ge banan reak' sanam hor' miŧ leka ol laġit' anko (rules) ŧarhaoetkana. Okatak' parsi reak' bananre acak' parsi são eŧak' parsi reak' aŋanko apnar reak' tinak' daŋe menak', ona parsi reak' banan unak'ge daŋeanak' parsi bujħauka. Ona banan reak' sidħa sombond parsi reak' aŋanko reak' ucran são menaka.

Miŧ bar niamko

Judi kajnum tayomre eken beħaŧinok' harop

tahenkhan, tobe ona kajnum do jos kajnum (transitive verb) lekae kamietkana ar ona sãote ujnumanak' kurai tala jorao (pronominal object infix) ban tahenkana. Buṭa sabad (base word) muṭaṭre a, o, o, o tahenkhan e lagaoka;

jemon-

**baḍa-e-ae, hoho-e-ae, teṅgo-e-ae.**

Buṭa sabad muṭaṭre a se u tahenkhan i lagaoka,

jeleka-

**agu-i-ae, a-i-ka-u=aiḱau, uihar, naihar, baihar eman.**

Noa do eken kami kajnum (active verb) sãoge hoyoka.

Judi kana do nunum (noun) lai laḱit beoharokkana, tobe kana do judare ologoka,

jeleka -

**Noa do ul bele kana; uni a' babawak' nutum do Budhrai kana eman.**

Judi kana do kajnum (verb) sãote roṛogokkana, tobe noa do kajnum sao milaukate ologoka,

jeleka-

**jometkan tahẽkanae; uni doe calakkana eman.**

a sãote i lagaoka e do ban,

jeleka -

**a+i=aiḱau (aekau do ban)**

a sãote u lagaoka o ar w do ban,

jeleka -

**a+u=aulau (aolau, awlaw do ban)**

a sãote e lagaoka y do ban,

jeleka -

**a+e=baḍae (baḍay do ban)**

a sãote o lagaoka u, w do ban,

jeleka-

**a+o=benao (benau, benaw do ban)**

e sãote o lagaoka u, v, w ban,

jeleka -

**e+o=leoha (leuha, levha, lewha do ban)**

e sãote o lagaoka u, v, w do ban

**e+o=dheo (dheu, dhev, dhew do ban)**

e sãote o lagaoka u, v, w do ban,

jeleka-

**e+o=heo (heu, hev, hew do ban)**

uni ujnnum sãote e lagaoka y do ban,

jeleka-

**uni+e=unie (uniy do ban)**

u sãote i lagaoka e, y do ban,

jeleka -

**u+i=uihar (uehar, uyhar do ban)**

e tayomte a hijuka y do ban,

jeleka -

**e+a=sea (seya do ban)**

i sãote a lagaoka y do ban,

jeleka - **i+a=kurhia (kurhiya do ban)**

o sãote a lagaoka w do ban,

jeleka -

**o+a=oar, koa (owar, kowa do ban)**

u sãote a lagaoka w do ban,

jeleka -

**u+a=rua, cua** (ruwa, cuwa do ban)

**i saote o, a lagaoka y** do ban,

jeleka -

**i+o=piq** (piyo do ban)

**i+a=pia** (piya do ban)

Metakme mit' ucranok' barea behatinok' harop (diphthong) do nonka ologoka :-

<b>a tayomre do e = ae</b>	-	<b>baɖae, ae, aema</b>
<b>a tayomre do o = ao</b>	-	<b>bahao, benao</b>
<b>a tayomre do i = ai</b>	-	<b>aikau, mai</b>
<b>a tayomre do u = au</b>	-	<b>aulau, bulau</b>
<b>e tayomre do a = ea</b>	-	<b>barea, sea</b>
<b>e tayomre do o = eo</b>	-	<b>leoha, beohar</b>
<b>e tayomre do o = eo</b>	-	<b>heo</b>
<b>e tayomre do i = ei</b>	-	<b>ei mai!</b>
<b>e tayomre do o = eo</b>	-	<b>dheo</b>
<b>i tayomre do a = ia</b>	-	<b>pia, ia ya!</b>
<b>i tayomre do o = io</b>	-	<b>jion</b>
<b>i tayomre do u = iu</b>	-	<b>jiu, maejiu</b>
<b>o tayomre do a = oa</b>	-	<b>oar, koa</b>
<b>o tayomre do e = oe</b>	-	<b>boeha</b>
<b>o tayomre do e = oe</b>	-	<b>koe</b>
<b>o tayomre do i = oi</b>	-	<b>oi okate!</b>
<b>u tayomre do a = ua</b>	-	<b>rua</b>
<b>u tayomre do i = ui</b>	-	<b>uihar</b>

Santalire mit' ucranok' pea behatinok' haropante (triphthong) hõ sabad benaokkana,

jeleka -

**ea+e = eae** (seven)

**oa+o = oao - joao** (mature)

**ia+u = iau - riâu** (invite to come along)

**ae+o = aeo baɖaeok'** (beknown)

**oe+ea+e = oeeae koe eae** (he will ask)

**oe+ae+ae = oeaeae koeaeae** (he will ask for him)

**eao = leao**

## BANANRE BHUL SUDHAR

**do** ar **do** talare begar menaka. **do do** hukum katha beoharre larcaroka ar **do do** ayat reak' juticak' (particle) kana.

Namuna:-

**do** ya, amge calakme; in **do** ban calao dareakkana.

**oko do** gunum (adjective) kana ar **oko do** kukli ujnum (interrogative pronoun) kana.

Namuna:-

**oko** barae, okare **coe oko** akan tahẽkan.

**jorok'** ar **jorok'** do juda-juda sabad kana

Namuna:-

**jorok'** - culha thenle **jorok'** kana.

**jorok'** - sarim khon dak **jorok'** kana.

**lo** ar **lo** reak' begar

**lo** ar **lo** do banarge kajnum (verb) kana. Menkhan onakin sabad do dohrakate beoharlen khan mane do

judak'kangea.

Namuna:-

- lo - chami do kicric'e lokeda.  
 lolo - den se lolo ca iman'pe.  
 lo - do, dak'lo aguime.  
 lolo - ađi khandri khon dak' lolo  
 hoyokkana.

### kol, kol ar kol sabadre begar

kol do kajnum ar kol ar kol do nunum (noun) kana.

Namuna:-

- kol - ciđhi don'kolgeda.  
 kol - dak'kolte guhumko pataokeda.  
 kol - kol c'e'e do ađi mon'je  
 nelokkana.

### hoe ar hoe sabadre begar

hoe do kajnum (verb) ar hoe do (noun) kana.

Namuna:-

- hoe - nes horo do hoe laćacakana.  
 hoe - khi'ki si'kam, rearge hoe  
 hijukkana.  
 hoyok' - ban' parhaolen khan cet'  
 hoyok'a?  
 hoyok' - in' do setak're gocon'  
 hoyok'a.  
 ocok' - noa ciđhitepe bađae ocok'kana.  
 ocok' - nonde khon usara ocok'me.

### ceť ar ceť sabadre begar

ceť do kajnum ar ceť do gunum kana.

Namuna:-

- ceť - iskulre do parhaokin' cet'eda.  
 ceť - one con' ematme, ceť adom  
 khojokkana?  
 ceť, ceť - iskulre do cet'em cet'eda?

### horo, horo, horo sabadre begar

horo, horo do nunum (noun) kana ar horo do pukrau  
 (particle) sabad kana.

Namuna:-

- horo - horo do aurile rohoea.  
 horo - horo-horo lađu emakope.  
 horo - dharti do horo deare menaka.

### godo ar godo sabadre begar

godo do nunum ar godo do kajnum-gunum (Adverb)  
 sabad kana.

Namuna:-

- godo - godo do bhugak'reko tahena.  
 godo - godo-godo dak'atukkana.





**keṛ-keṛ** ar **keṛ-keṛ** sabadre begar

**keṛ-keṛ** do gunum (adj.) ar **keṛ-keṛ** do pukrau (particle) sabad kana.

Namuna:-

- keṛ-keṛ** - setonte hasa do rohor **keṛ-keṛ**ena.  
**keṛ-keṛ** - sogoe koṛa do pajheṛ **keṛ-keṛ**ko hohokeda.

**ṣol** ar **ṣol** sabadre begar

Noakin do banarge nūnum (noun) kana.

Namuna:-

- ṣol** - **ṣol** do rawalgea, noa do pukhrire janamokā.  
**ṣol** - **ṣol** hako do gaḍareko nāmokā.

**era** ar **era** sabadre begar

**era** do nūnum (noun) ar **era** do kajnum (verb) kana.

Namuna:-

- era** - uni doe okoeren **era** kana?  
**era** - jonḍra do aurile **era**.

**ol** ar **ol** sabadre begar

**ol** do kajnum ar **ol** do gunum (adj.) kana.

Namuna:-

- ol** - ciṭhi doṅ **ol**keda.  
**ol** - noa do dare bele do bañ, noa do **ol** beleakkana.

**jolok'** ar **juluṭ'** sabadre begar

Namuna:-

- jolok'** - amak' marsal do **jolok'te**ge taheṇma.  
**juluṭ'** - bakjunu do **kojuluṭ'-juluṭ'** baṛaea.

Santalire aḍi ḍher onkan sabadko menakā, oka do miṭ sabad reakge aema mane ar bañkhan inā sabadge ucran gunre thoṛa-thoṛa begar menakā, jemon-

**ap'** (cēṛē **ap'**, mēṭhā **ap'**), **up'** (hoṛmo **up'**, jinis **up'**), **so** (miṭ lekan **jo**), **so** (sāhēṭ' **bas**), **baṛe** (baṛe dare nūtum, am baṛe), **heṛak'** (roṅ - **heṛak'** sim, **heṛak'** sakam), **Sam** (hoṛak' nūtum), **Samak'** (oka jinis do **Sam** ṭhen menak'), **samak'** (jel **samak'** eman), **toṛ** (goḍo lekan kaṭic' janwar), **toṛ** (cūṭikoak' sui lekan paṭi), **hec'** (sakam **hec'**, hijuk'=hec') eman. (Noako do eken namuna leka emena.)

## DABAṘ-ARAṆ (WORD STRESS)

Sabad roṛ **jokhec'** mane se saphate ucran laḡiṭ tinre abo do ucran **jokhec'** jāhā akhor ṭhec' jaṣti jorbon emakkana, **tobe** ona kami do Dabaṛ-Araṅ mentebon metakkana. Santalire akhortētre dabaṛ-araṅte do sabad reak' mane bae bodol daṛeakā, menkhan noa reak' mane do ekalte noa do bañ kana je Santali sabad reak' mimiṭ akhor reak' dabaṛ-araṅ do miṭ somangea mente. Santalire hō eṭak' parsi lekage juda-juda akhorko reak' ucran do dabaṛ-

arañ sãote bodol do bodolokkangea; menkhan akhorre dabar-arañ karonte mane do ban bodoloka, eken ucrange ucranokkana dabar arante. Menkhan nonkan dabar-arañ do etak parsirengo tinre Santali roṛ reakko kurumuṭuida, onkan hoṛ hotetege jãhãman tãhãko roṛa seko dabar-araña. Santalire okaṭak' sabadre okaṭak' akhorre ceṭ ar ceṭ leka ar tinaṅ' aṭ dabar-arañ roṛ jaruṛa, okaṭakte do Santali roroṛ hoṛ lekan ucran sey roṛ dareak', ona do Santali go-parsi roroṛiṅge beste doe baḍaea. Menkhan okoe hoṛ noa bae baḍaea, uniaṅ' ucranre baḍae hoṛ do bhule nam goda. Nokoe noa iatege Santali ban bakḍaic' do durup' do durup, calak' do cala, dak' do da, banuka' do banua eman lekako ucran ocoetkana.

Santali sabadre sabad reak' okaṭak' akhorre dabar hoyok', noa do laha khonge niṭgea. Ar bankhan do jãhãman tãhã dabar-arañlenkhan nonka hõ hoe dareaka, oka do jãhãn manege ban hoyokkan, jeleka :-  
khaçlak'-khaçla, bakḍae-baḍakae, mamakiç'-mamaic' eman.

Santali sabadre sabad reak' okaṭak' akhorre dabar-arañ hoyok', noa do laha khonge baḍaema menakge, ona iate Santali ceceṭiç' hoṛ do noa hõ laiae jaruṛkana je uni do ona sabadko reak' ucran do ganokak' akhorrege jemon dabar-arañ doe hoe ocoe.

#### RAR BODOLOK' ARAN' (INTONATION)

Tinre sabadbon ucranetkana, tobe sabadko do

ucrañ jokhec' miṭ lekan rar do babo roṛetkana. Ucran jokhec' rar do cetan ar lataroktege takenkana. Roṛ jokhec' noa cetanok' ar latarok' reak' begartetge rar-bodol rar doko metakkana. Roṛ jokhec' (pitch) bodolok' do manwawak' sobhab kana. Rar bodolok' do aema karonte hoyokkana. Adom jokhec' arañ ṭailak' jasti nok' orkate tarkolenkhan hoyokkana ar adom jokhec' do inboro khon hoe bahre oḍonlenkhan hõ ar adom jokhec' do ucran okte do alaṅ reak' jelre ḍher laṛaolekhanre hõ rar bodolokkana. Ona iate rar hõ miṭten tehad arañ kana, okaṭak' do bodolokkan dunia reak' aema parsikore Santali ayatko reak' maney bodol dareakkana.

Roṛ bodolok' karonte ucranokkan roṛ cetanok' ar latar rarḱo do latar-cetanok' rarḱo metakkana (intonation). Tinre miṭ lekan roṛtebon roṛlekhan ora-sora se barabari roṛbon metakkana. Menkhan tinre ucran reak' roṛ cetanokkana tobe ona do cetanok' rar (ascending) ar latarokkan rar (decending) do latarok' rarbo metaka. Partul-  
miṭbar ayatbon nellege :-

- (i) Somae Paṛia doe ḍaktor kana. (general statement)
- (ii) Somae Paṛia doe ḍaktor kana? (interrogative sentence)
- (iii) Somae Paṛia doe ḍaktor kana! (exclamatory sentence)

## DOBAȚIA ARAŃ (JUNCTION SOUND)

Nel baraedabon je parsikore sabadko ucran jokhec' miten aran tayom ar etak' aranbon ucranetkana, adom jokhec' do begor thiroktebon aranetkana ar adom jokhec' do miten aran ucran tayom etakak' aran reak' ucranre thoragan thirnokkate hoyokkana. Aema parsikore miten sabad reak' aran ucran jokhec' talare hijukkan thirok' hotete sabad reak' maney bodoletkana. Miten sabad reakge barea aran talare hijukkan thora thirnokkate roge dobaȚia aran doko metakkana. Partulbon nela :-

**aimai** reak' mane do woman, ai do hohojoŋ saġai chond cinha (case) kana ar **mai** reak' mane do hara godok' kuri (teenage girl). Noa reak' benegar baġae laġitge latarre partul emogokkana :-

- (A) (i) Uni doe aimai kana sey herel kana?  
 (ii) Ai mai, okaren kanam?
- (B) (i) Guhum arjao do aġi jaruġea.  
 (ii) Guhum arjao do aġi moŋj hoyakana.

Ona iate okako parsikore dobaȚia-aran karonte sabad reak' mane bodolokkana, ona do ona parsi reak' dobaȚia-aran tari reakge manaokkana.

DobaȚia-aran do bujhaŋ laġit' (+) cinha hotete udugoka. Metakme judi barea sabad talare (+) cinha lagaoakankhan noa reak' mane do noage je sabad ucranre

thora jiraŋ se thir menaka. DobaȚia-aran do jaoge barea aran talarege asokaetey kamia. Santalire ho adom-adom sabadko do dobaȚia-aran karonte sabad reak' maney bodoletkana,

jeleka -

<b>Aimai</b>	-	<b>ai + mai</b>
<b>katkom</b>	-	<b>ka + kom</b>
<b>sarjom</b>	-	<b>sar + jom</b>
<b>dokhol</b>	-	<b>do + khol</b>
<b>mitsae</b>	-	<b>mi + sae</b>
<b>dope</b>	-	<b>do + pe</b>

Noage ayatre larcaratebon nellege, tobeanecge saphatebo bujhaŋ utara :-

- (1) (a) Uni doe aimai kana sey herel kana?  
 (b) Ai mai am dom okaren kana?
- (2) (a) **Katkom** do bhugakreko tahena.  
 (b) Noa oraġ' reak' do saŋga kaġ **komgea**.
- (3) (a) Sukri do **sar jomkatey** daġkeda.  
 (b) Jaherre aġi saŋge **sarjom** dare menaka.
- (4) (a) Bajun do khas jumie **dokhol**keda.  
 (b) Noa matkom dare **do khol**gea.
- (5) (a) Noa saġar do kulhi khon **mitsaepe**.  
 (b) Noa puthi reak' gonoŋ do **mi'sae** taka kana.

- (6) (a) Bohok'sura **dope** jomkeda?  
 (b) Bohok'sura **do pe** hĩsre haĩnpe.

Cetanre emakan sanam sabadko do ayatre larçarkate partulbon nĩlkeda. Onkage ayat tala reak' mane bodol dareak' aran larçarkate, sabad thirnokkate roř se aranlen khan mane bodolok' reak' etakak' ayat arhõ emogok' partulre sabad do ban haĩnokã, bickom ayat reak' miř hĩsre thirnokkate aranokã, oka do ayat reak' maney bodoleřkana ar ona do comma (,) hotete begarokã, jeleka :-

- (1) (a) marak', tukare.  
 (b) marak'tukare, ayañ biñ.  
 (2) (a) daka tukuc', cořre.  
 (b) daka, tukuc'cořre.  
 (3) (a) gađi cořre.  
 (b) gađi, cořre.

## ARAN AR LIPI

Aran do manwa ar janwar banarakge menaka. Ar bejivianak' jinis hõ aran menaka. Jivianak' ar bejivianak' jinisre niage begar menaka je bejivianak' jinis do manwae beohar khange sadea ar bankhan do ban. Setawak' bhok' ar pusiak' **miyuñ-miyuñok'** do janwarak' moca khon odokok' aran kana. Bejivianak' jinis aranbon nĩl lekhan noako hõ hoe dareaka :- **řamak se tumdak' ru aran se dak' atuk'**

**sokojok' aran, banam sade** reak' aran, **thari-baři nuruk' aran** eman emanko. Beakorõre eken manwawak' moca khon odokok' se ucranok' aran babot reakge bornon emogokkana.

Manwa hotete ucranok' aran do aema lekana. Adomak' aran nonkanak' hõ menaka, one oka do manwawak' moca khon gořeř aran, rak'eř aran, landae aran, seren' aran, thayok', cirhař-corhoř tarameř aran, udureř aran, gerañ aran, sahan parařak' jokheç' hũh'-hũh' ar manwa acak' menjõnte acak' moca khon ucran aran. Noa do abo manwawak' aranbon men darekea. Aran maneanak' ar bemaneanak' banarge hoe dareka. Bemaneanak' aran do parsi se bhasabo metakkana. Noa aran hotete abo do aboak' menjõñ, hudis-biçar se atkarkobo lai sodoreřkana. Roř do sabad hotete benaokkana ar sabad do aema lekanak' maneanak' aran milaukate hoyokkana.

Pařilre manwa akoak' hudis-biçar se pařiau emanko rařhi-jogao lağıř ađi jařurko atkareda. Pařil do manwa katha sodor lağıř ayat sodor lekanak' cinha hotete kamiko calao-banao hatareř tahẽkana, inakate oton-taenom sabad cinha (words symbol) ar aran cinha (sound symbol) benao tayom paseç' lipi cinhako benoana. Cinhako do okte napitre bodol idiena. Nitak' lipi cinha do muçat' rup kana. Menkhan nitak' noa kami ban muçatakana.

## JIRAUK' CINHA AR LAṬU AKHOR REAK' LARCAR (PUNCTUATION AND THE USE OF CAPITAL LETTERS)

Tinre abobo roreda, tobe abo aboak' ontor katha sodor laḡit' jãhã ban jãhã thenbo thirokkana. Menkhan, tinre abobo oletkana, tobe apnarak' olokre jirauk' cinha (punctuation mark) reak'bo laçaretkana jemon ondegebon thirok' okare do aboak' parsi reak' mane bujhauk' laḡit' ona cinha reak' jaruḡ paraokkana.

Jirauk' cinha babotre nahak' jug reak' hudis do noa kana je jirauk' cinha reak' laçar do ondege hoyokma, okare do katha sodor laḡit' bujhaḡ ar sapha-saphi bujhaḡ laḡit' jaruḡokkan.

Santali laḡit' noako jirauk' cinhakobo beohar dareaka :-

- (i) Laṭu Harop Cinha (Capital Letter)
- (ii) Purau Thirok' Cinha (Full Stop) = (.)
- (iii) Kom nok' Thirok' Cinha (Semi Colon) = (;)
- (iv) Kom Thirok' Cinha (Comma) = (,)
- (v) Udug Cinha (Colon) = (:)
- (vi) Hahara Udug Cinha (Exclamation) = (!)
- (vii) Raska ar Hahara Selet Kukli Cinha  
(Exclamation with Question Mark) = (!?)
- (viii) Kukli Cinha (Question Mark) = (?)

- (it) Katha Udug Cinha (Quotation Mark) = (“ ”) se (' ')
- (f) Gar/Des Cinha (Dash) = (-)
- (fi) Jokrao Cinha (Hyphen) = (-)
- (fii) Berket Cinha (Bracket) = [ ], { }, ( )

## LAṬU HAROP CINHA (Capital Letter)

Laṭu harop/sabad reak' pahil akhor do noako obosthare beoharoka :-

- ❖ Ayat reak' pahil akhor Dela parhaokbon ceda.
- ❖ Horak' nutum ologokre Sida, Kanhu, Cand, Bhaero eman.
- ❖ Paris ologokre Murmu, Tuḡu, Kisku, Soren eman.
- ❖ Jãhã disam, rajosti, nagraha ar atoko reak' nutumre Dilli, Jharkhand, Dumka, Sahebgonj, Badhet eman
- ❖ Parsi reak' nutum ologokre Santali, Hindi, Baḡla, Ingraji eman.
- ❖ Jãhãe horak' nutum lahare lagaok' gunumre (adjective) Manotan (Man), Somaj Dorodia/Susaria eman.
- ❖ Dhorom reak' nutum ologokre Hindu, Musla, Sikh, Isai eman.
- ❖ Porobko reak' nutumre Baha, Sohrae, Erok', Janthar eman.
- ❖ Jãhã Baisi se huda reak' khatu rup ologokre A.I.S.W.A.C.S, DC, SDO

- ❖ Nagamre ghaṭaoakan ghoṭna reak' nūtum Santal Hul, Jharkhand Lāraona, Bañjhi Kāṇḍ eman.
- ❖ Rajari dolko reak' nūtumre - J.M.M., B.J.P, S.P, AJSU
- ❖ Din-maṅṅako reak' nūtumre Som, Moṅgol, Čat, Baisak eman.

## PURAU THIROK' CINHA (Full Stop)

Purau thirok' cinha do noako obosthare beoharoka  
:- thirok'

- Mela Katha (Statement), Hukum (Command) ar Oko Kukli (Indirect Question) mučatre Uni doe Kaṅhu kana. (Mela Katha); Alom kaumaṅua. (Hukum); Unie metadiṅa je inak' nūtum do cet' kana. (Oko kukli).
- Baisi, nūtum se huda reak' khaṭo rup ologokre J.M.M., Dr, Ph.D  
Jāhāe hoṛak' nūtum khaṭote ologokre P.O. Boḍiṅ
- Somoe, din/ṭarik, maṅna ar bochor udugokre 5.00 baje, 30.6.1855

## KOM NOK' THIROK' CINHA (Semi-Colon)

- ❖ Judi barea beṭehaḍ goṛo (independent clause) talare jāhān jokṛao sabad (menkhan, ar jemon) baṅ taṅkhan tobe ona banar talare goṛo ayat (clause)

begar laḡit' komnok' thirok' cinha beoharoka Do calakime; cedak'bae hijukkana?

- ❖ Komnok' thirok' cinha do kom thirok' ar purau thirok' cinha talare lagaoka Kuriko doko sereṅeda; korako doko ruieda.

